





# SUPA™ STAINLESS STEEL COLLECTION

Suitable for PVCu, timber,  
aluminium & composite doors



# CONTENTS.

Page	Product
4	<b>SupaSecure™ Door Handle</b> High security stainless steel door handle. SBD approved. 
6	<b>Supa™ Door Handle</b> Standard security stainless steel door handle.
8	<b>Supa™ Safety Door Handle</b> Stainless steel door handle designed with accessibility in mind.
10	<b>SupaSecure™ Letterplate</b> High security stainless steel letterplate. TS008 certified, SBD approved. 
12	<b>Supa™ Letterplate</b> Standard security stainless steel letterplate.
14	<b>Supa™ Pull Bar Collection</b> Inline, offset, bow, D, V shape stainless steel designs.
18	<b>Supa™ Square Pull Bars</b> Inline, offset and inline mitred stainless steel designs.
20	<b>Supa™ Door Knobs</b> 3 stainless steel finishes.
22	<b>SupaSecure™ Escutcheons</b> 2 stainless steel styles. SBD approved. 
24	<b>SupaSecure™ Pull Escutcheons</b> 2 stainless steel styles. SBD approved. 
26	<b>Supa™ Escutcheons</b> Standard, pull and square designs.
28	<b>Supa™ Door Knockers, Numerals and Letters</b> Stainless steel accessories.
32	<b>Part Numbers &amp; Dimensional Drawings</b>

# SUPASECURE™ STAINLESS STEEL

## DOOR HANDLES



Mila's SupaSecure™ door handles combine **high quality stainless steel** with **clever security technology** for market-leading **protection**, extreme **strength and durability** and long-lasting **operational performance**.

The range has been independently tested to the toughest industry standards including BSEN 1906, is **Secured by Design** approved, **BSI Kitemarked** and is **guaranteed for 25 years**.

### Accreditations.



**Secured By Design**  
Official Police Security Initiative



**BSI Kitemark**  
2 Star Security



**Enhanced Security**  
PAS24: 2022



**Extreme Durability**  
BSEN 1906  
200,000 cycles | 100kg lever pull



**Corrosion Resistance**  
BSEN 1670, Grade 5  
Testing exceed 1000 hours salt spray



**Operation & Weather Tightness**  
BSEN 6375 - 1, 2, 3  
50,000 cycles under load



**Approved Document Q**  
Certified

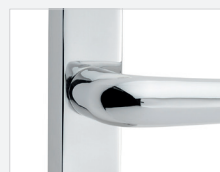


**TS007**  
Enhanced security of cylinder associated hardware

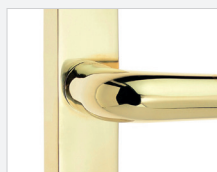
### SUPA™ Stainless Steel Finishes.



Brushed Stainless



Polished Stainless



Polished Gold PVD  
Stainless

# SUPASECURE™ STAINLESS STEEL

## DOOR HANDLES



### Deterrent

SBD logo laser etched onto external backplate,  
BSI Kitemark etched onto internal backplate

### Durable

Cast stainless steel, grade 304, provides strength and a long-lasting finish.

### Clever

Chamfered backplate shoulders provide mole-grip resistance

### Extreme

100kg lever pull tested for super-strong, proven axial strength

### Protected

Integrated cylinder guard, visible within the raised backplate,  
combined with an anti-drill disc which spins if attacked,  
provides complete cylinder protection

**Market-leading 25 year guarantee.**



### New

#### Short Backplate Option!

Universal design for both left and  
right handed doors. Now available in  
240mm and 220mm backplate.





# SUPA™ STAINLESS STEEL

DOOR HANDLES

Mila's Supa™ door handles combine **high quality stainless steel** with **elegant, modern design**.

The Supa™ range has been independently tested **beyond industry standards** for **long-lasting** weather resistance and **high operational performance**, and is **guaranteed for 25 years**.

## Accreditations.



### Corrosion Resistance

BSEN 1670, Grade 5  
Testing exceed 1000 hours salt spray



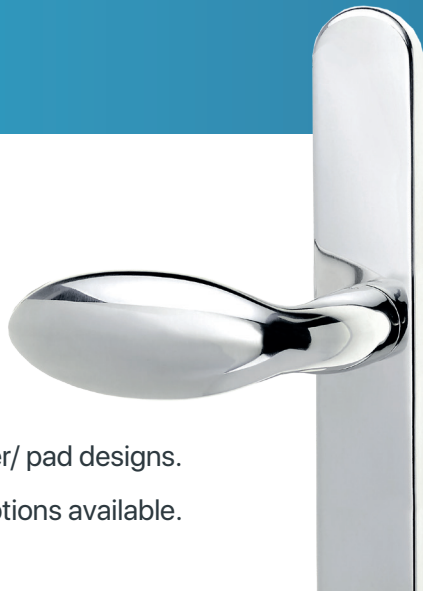
### Extreme Durability

BSEN 1906  
200,000 cycles | 100kg lever pull



### Operation & Weather Tightness

BSEN 6375 - 1, 2, 3  
50,000 cycles under load



Available in lever/ lever and lever/ pad designs.  
Blank backplate options available.

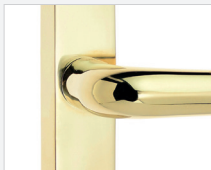
## SUPA™ Stainless Steel Finishes.



Brushed Stainless



Polished Stainless



Polished Gold PVD  
Stainless

# SUPA™ STAINLESS STEEL

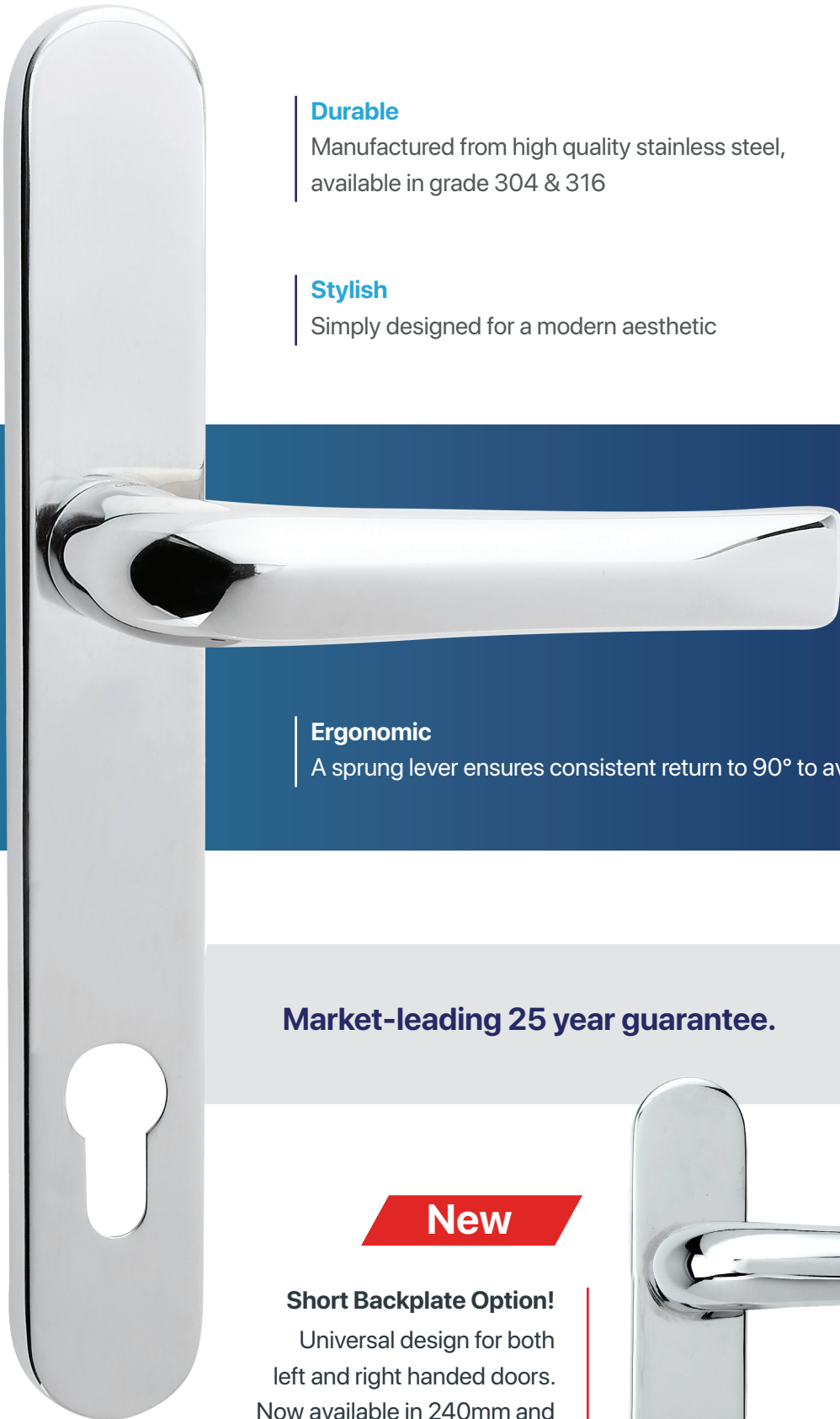
DOOR HANDLES

### Durable

Manufactured from high quality stainless steel,  
available in grade 304 & 316

### Stylish

Simply designed for a modern aesthetic



### Ergonomic

A sprung lever ensures consistent return to 90° to avoid 'handle sag'

Market-leading 25 year guarantee.



## New

### Short Backplate Option!

Universal design for both  
left and right handed doors.  
Now available in 240mm and  
220mm backplate.





# SUPA™ STAINLESS STEEL

SAFETY DOOR HANDLES

The Supa™ Safety Door Handle, part of Mila's Supa™ stainless steel door furniture range, has been ergonomically designed with accessibility in mind.

The curved shape of the extended lever makes it easy to grip and simple to operate, even with a closed fist. The returned end of the lever prevents anything becoming caught on it, providing additional safety. The handle is available in 5 durable stainless steel finishes and has been styled to be easily identifiable for partially sighted.

## Accreditations.



### Corrosion Resistance

BSEN 1670, Grade 5  
Testing exceed 1000 hours salt spray



### Extreme Durability

BSEN 1906  
200,000 cycles | 100kg lever pull



### Operation & Weather Tightness

BSEN 6375 - 1, 2, 3  
50,000 cycles under load



### Approved Document M

Building regulations compliant



### Lifetime Homes

Make life as easy as possible for as long as possible

## SUPA™ Stainless Steel Finishes.



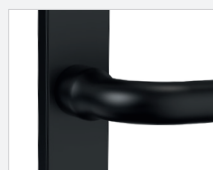
Brushed Stainless



Polished Stainless



Polished Gold PVD  
Stainless



Black Powder Coated  
Stainless Steel



White Powder Coated  
Stainless Steel

# SUPA™ STAINLESS STEEL

SAFETY DOOR HANDLES

## EASY INSTALLATION

Universal design for both left and right handed doors.

Sold complete with spindles and 3 screw lengths as standard.

### Ergonomic

Curved design combined with extended length helps grip during use & enables operation even with a closed fist

### Protected

Returned lever prevents anything being caught & ensures safety

### Accessible

Easily identifiable styling & available in a range of finishes which provide contrast for partially sighted people

### Universal

Suitable for both left and right handed doors, 240mm backplate in PZ92 and PZ92/62



# SUPASECURE™ STAINLESS STEEL

## TS008 LETTERPLATES



Mila's SupaSecure™ high security letterplate is TS008 certified, Secured by Design approved, BSI Kitemarked, ADQ compliant and meets the requirements of the Postal Services Standard BSEN 13724.

High quality stainless steel combines with clever security technology for extreme strength and durability and long-lasting operational performance.

For extreme weather tightness the Supa™ letterplate has been tested to BS6375-1 resisting 150 Pascals air pressure while preventing water ingress applied at 2 litres per minute under gale force wind conditions.

Independently tested to the toughest industry standards and guaranteed for 25 years.

### Accreditations.



**Secured By Design**  
Official Police Security Initiative



**BSI Kitemark**  
2 Star Security



**Enhanced Security**  
PAS24: 2022



**Letterplate Security**  
TS008 Certified  
200,000 cycles | 100kg lever pull



**Corrosion Resistance**  
BSEN 1670, Grade 5  
Testing exceed 1000 hours salt spray



**Extreme Tested**  
BSEN 6375 - 1

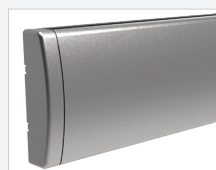


**Approved Document Q**  
Certified



**Postal Services Standard**  
BSEN 13724: 2013  
To ensure 'delivery in good condition' of postal items

### SUPA™ Stainless Steel Finishes.



Brushed Stainless



Brushed Gold PVD  
Stainless



Polished Stainless



Polished Gold PVD  
Stainless



Black Powder Coated  
Stainless



White Powder Coated  
Stainless

# SUPASECURE™ STAINLESS STEEL

## TS008 LETTERPLATES



### Anti-fishing technology

Our patented anti-fishing fins operate with a smooth concertina action for clever, secure, restricted flap opening and a compact aesthetic

#### Slim

Compact internal side projects just 45mm discreet and allows the door to fully open

#### Fishing Deflection

Angled postal ramp deflects items upwards

Patented Design  
Application no.  
GB2576184



#### Durable

Manufactured from high quality stainless steel, grade 304

#### Extreme

Achieved 100kg flap pull test for super-strong enhanced security

#### Beautiful

Concealed flap-operating mechanism for seamless design

#### Secure

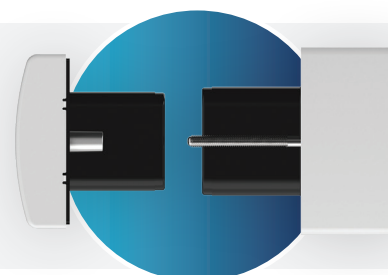
Restricted opening angle of 80° is accessible and secure

#### Standard Size

Fits door thickness 40-80mm

#### Coordinated

Matching stainless steel frame and flap



### Installed in less than 2 minutes

**Ready to fit** - straight from the box to the door in 1 piece

**Standard aperture** - no special fixings or routing





# SUPA™ STAINLESS STEEL

## LETTERPLATES

Mila's **Supa™ letterplate** is manufactured from **high quality stainless steel**. The **contemporary design** features a **matching frame and flap**, and suites with other **Supa™** stainless steel door furniture for a **fully coordinated** look.

The range has been independently tested to the toughest **performance** standards including BSEN 1670 achieving the highest grade 5 rating for corrosion resistance. In fact, the SUPA™ stainless steel letterplate has been tested to twice the industry standard requirement achieving **1000 hours** in a salt spray chamber.

For **extreme weather tightness** the Supa™ letterplate has been tested to **BS6375-1** resisting 150 Pascals air pressure while preventing water ingress applied at 2 litres per minute under gale force wind conditions.

### Accreditations.



#### Corrosion Resistance

BSEN 1670, Grade 5  
Testing exceed 1000 hours salt spray



#### Extreme Weather Tightness

BSEN 6375-1



#### Operational Durability

Clause 6.8 of TS008  
20,000 cycles

# SUPA™ STAINLESS STEEL

## LETTERPLATES

#### Coordinated

Matching stainless steel frame and flap

#### Intelligent

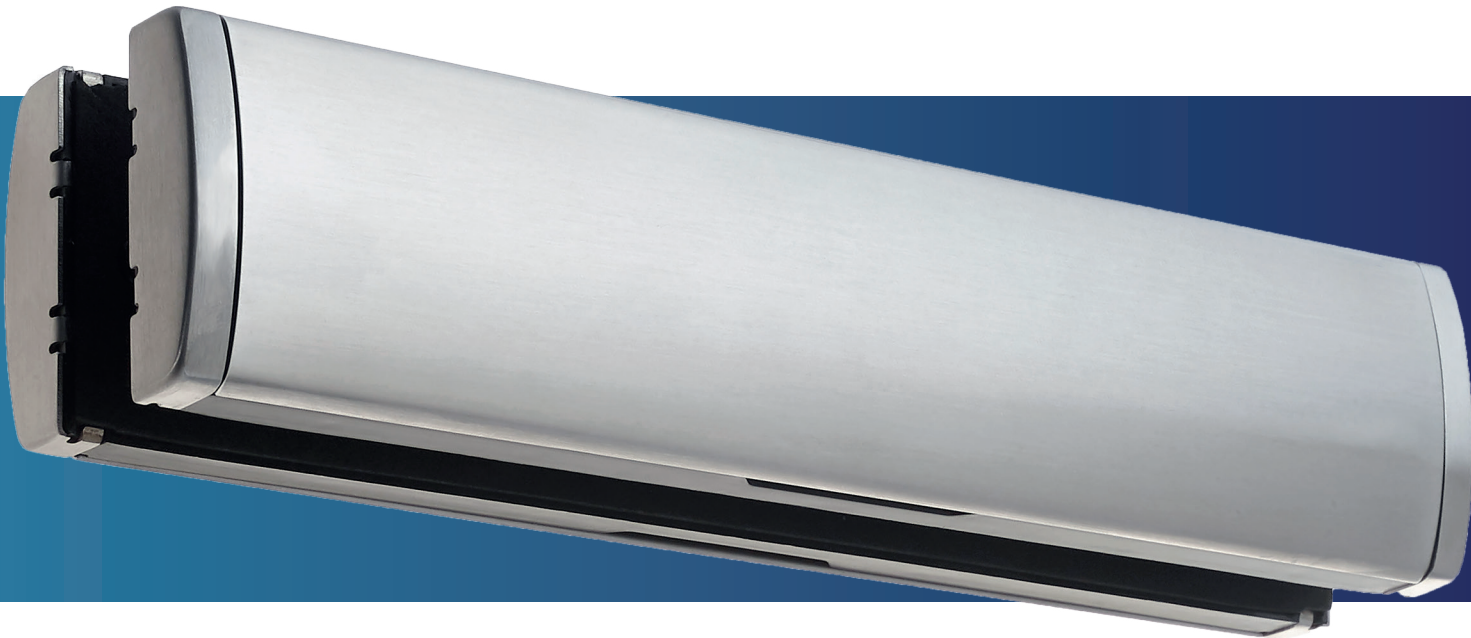
Flap opens fully to 180° without abrasion

#### Durable

Manufactured from high quality stainless steel,  
grade 304

#### Ergonomic

Finger recesses both internally and externally  
enable easy opening



#### Sleek

Concealed flap-operating mechanism for  
seamless design

#### Universal

Fits door thicknesses 24mm-56mm or 61mm-91mm  
with our telescopic sleeve extender

### SUPA™ Stainless Steel Finishes.



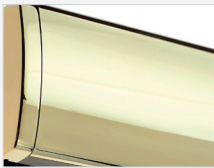
Brushed Stainless



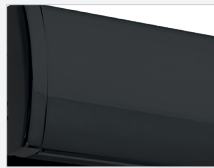
Brushed Gold PVD  
Stainless



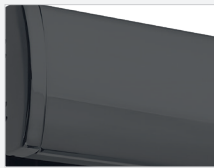
Polished Stainless



Polished Gold PVD  
Stainless



Luna Black PVD  
Stainless



Luna Grey PVD  
Stainless

Supa™ standard letterplates are **guaranteed for 25 years** for both  
mechanical operation and surface finish.





# SUPA™ STAINLESS STEEL

ROUND PULL BARS

Mila's Supa™ pull bars combine **high quality stainless steel** and **contemporary styling**.

The range is available in **2 modern designs** - inline and offset - and is available in 8 lengths from 400mm up to 1800mm. The off-set design is available in 45° and 60° angles to suit slimmer profile systems.

The pull bars range is **simple to install**, with **3 fixing kit options** available.

### Accreditations.

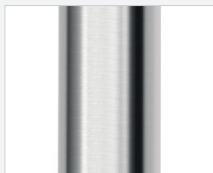


#### Corrosion Resistance

BSEN 1670, Grade 5  
Testing exceed 1000 hours salt spray

Finally, Mila's Supa™ stainless steel pull bars have been independently tested to BSEN 1670 achieving the **highest grade 5 rating** for **corrosion resistance**. In fact, the range has been tested to **twice** the industry standard requirement achieving **1000 hours** in a salt spray chamber for a **durable, long-lasting finish, guaranteed for 25 years**.

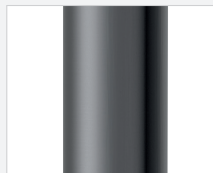
### Supa™ Stainless Steel Finishes.



Brushed Stainless



Luna Black PVD  
Stainless



Luna Grey PVD  
Stainless

# SUPA™ STAINLESS STEEL

ROUND PULL BARS

#### High Quality Finish

Brushed stainless steel, grade 316

#### 3 Fixing Options

Through fix, concealed fix or back-to-back

#### 2 Styles

Inline or Offset

#### 8 Lengths\*

400mm, 600mm, 1000mm, 1200mm,  
1400mm, 1600mm, 1800mm

\*Luna Black & Grey PVD Stainless only available in 800mm,  
1200mm & 1800mm.

#### Universal

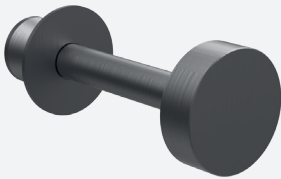
Suitable for both left and right  
handed doors

Choose your  
Fixing Kit Option  
P.41

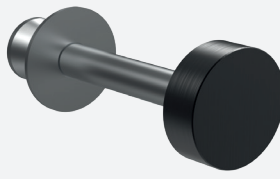
Inline  
Round

Offset  
Round

### Colour-Matched Fixing Kits



Supa Pull Bar Through Fix Kit  
Luna PVD Black



Supa Pull Bar Through Fix Kit  
Luna PVD Black



# SUPA™ STAINLESS STEEL

CURVED PULL BARS

Mila's Supa™ curved pull bars combine **high quality stainless steel** and **contemporary styling**.

The range is available in **3 curved designs**: Bow, D and V shapes.

The pull bars range is **simple to install**, with **3 fixing kit options** available.

### Accreditations.



#### Corrosion Resistance

BSEN 1670, Grade 5  
Testing exceed 1000 hours salt spray

Finally, Mila's Supa™ stainless steel curved pull bars have been independently tested to BSEN 1670 achieving the **highest grade 5 rating** for **corrosion resistance**. In fact, the range has been tested to **twice** the industry standard requirement achieving **1000 hours** in a salt spray chamber for a **durable, long-lasting finish**, **guaranteed for 25 years**.

### SUPA™ Stainless Steel Finish.



Brushed Stainless

# SUPA™ STAINLESS STEEL

CURVED PULL BARS

#### High Quality Finish

Brushed stainless steel, grade 304

#### Universal

Suitable for both left and right-handed doors

#### 3 Fixing Options

Through fix, concealed fix or back-to-back

#### 3 Styles

Bow, V and D shapes

SUPA™  
Bow  
588mm

SUPA™  
V  
330mm

SUPA™  
D  
330mm



#### SUPA™ Suited

For a **fully coordinated** look, add our concealed-fix SUPA™ stainless steel escutcheons.

See more on page. 27



Choose your  
Fixing Kit Option  
P.41

# SUPA™ STAINLESS STEEL

SQUARE PULL BARS

Mila's Supa™ square pull bars combine **high quality stainless steel** and **contemporary styling**.

The range is available in **3 square designs**: inline, offset and mitred.

The pull bars range is **simple to install**, with **3 fixing kit options** available.

### Accreditations.



#### Corrosion Resistance

BSEN 1670, Grade 5  
Testing exceed 1000 hours salt spray

Finally, Mila's Supa™ stainless steel square pull bars have been independently tested to BSEN 1670 achieving the **highest grade 5 rating** for **corrosion resistance**. In fact, the range has been tested to **twice** the industry standard requirement achieving **1000 hours** in a salt spray chamber for a **durable, long-lasting finish, guaranteed for 25 years**.

# SUPA™ STAINLESS STEEL

SQUARE PULL BARS

#### High Quality Finish

Brushed stainless steel,  
grade 316

#### Universal

Suitable for both left and  
right-handed doors

#### 3 Fixing Options

Through fix, concealed fix or  
back-to-back

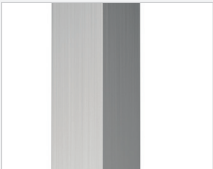
SUPA™  
Inline  
1200mm

SUPA™  
Offset  
1200mm

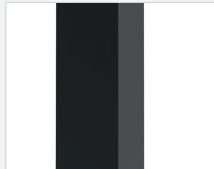
SUPA™  
Mitred  
1200mm

Choose your  
Fixing Kit Option  
P.41

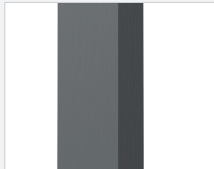
### SUPA™ Stainless Steel Finishes.



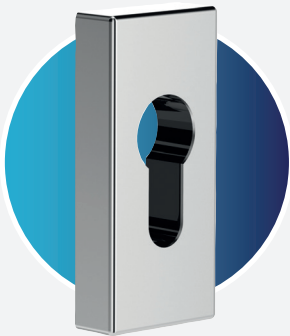
Brushed Stainless



Luna Black PVD  
Stainless



Luna Grey PVD  
Stainless



#### SUPA™ Suited

For a **fully coordinated** look, add our  
concealed-fix SUPA™ stainless steel  
escutcheons.

See more on page. 26





# SUPA™ STAINLESS STEEL

DOOR KNOBS

Mila's Supa™ door knobs combine **high quality stainless steel** and **elegant styling**.

The range is available in **5 stainless steel finishes**: brushed stainless steel, duo stainless steel combining a polished rose with a brushed knob, duo gold PVD stainless steel combining a polished rose with a brushed knob, Luna Black PVD stainless and Luna Grey PVD stainless.

Supa door knobs are **simple to install**, with **2 fixing kit options** available.

## Accreditations.



### Corrosion Resistance

BSEN 1670, Grade 5  
Testing exceed 1000 hours salt spray



Finally, Mila's Supa™ stainless steel door knobs have been independently tested to BSEN 1670 achieving the **highest grade 5 rating** for **corrosion resistance**. In fact, the range has been tested to **twice** the industry standard requirement achieving **1000 hours** in a salt spray chamber for a **durable, long-lasting finish, guaranteed for 25 years**.

## SUPA™ Stainless Steel Finishes.



Brushed Stainless



Duo Stainless  
- Polished Rose &  
Brushed Knob



Duo Gold PVD Stainless  
- Polished Rose &  
Brushed Knob



Luna Black PVD  
Stainless



Luna Grey PVD  
Stainless

# SUPA™ STAINLESS STEEL

DOOR KNOBS



### High Quality

Stainless steel, grade 304

### Universal

Suitable for both left and  
right-handed doors

### 2 Fixing Options

Through fix and  
concealed fix



# SUPASECURE™ STAINLESS STEEL

ESCUTCHEONS



Mila's SupaSecure™ escutcheons combine **high quality stainless steel** with **clever security technology** for market-leading **protection**, extreme **strength and durability** and long-lasting **operational performance**.

The range has been independently tested to the toughest industry standards including extreme, **heavy duty testing to BSEN 1906**, is **Secured by Design** approved, **BSI Kitemarked**, **ADQ compliant**, **TS007 certified** and is **guaranteed for 25 years**.

## Accreditations.



**Secured By Design**  
Official Police Security Initiative



**BSI Kitemark**  
2 Star Security



**Enhanced Security**  
PAS24: 2022



**Cylinder Enhanced Security**  
TS007 Certified



**Corrosion Resistance**  
BSEN 1670, Grade 5  
Testing exceed 1000 hours salt spray

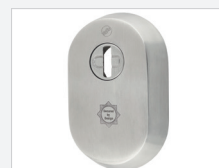


**Weather Tightness**  
BSEN 6375

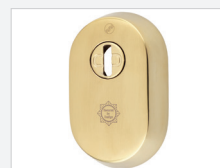


**Approved Document Q**  
Certified

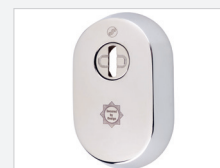
## SUPA™ Stainless Steel Finishes.



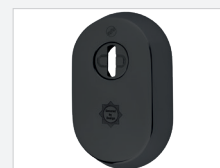
Brushed Stainless



Brushed Gold PVD  
Stainless



Polished Stainless



Luna Black PVD  
Stainless



Luna Grey PVD  
Stainless

# SUPASECURE™ STAINLESS STEEL

ESCUTCHEONS



### Deterrent

Secured by Design logo laser etched onto external escutcheon, BSI Kitemark etched onto internal escutcheon

### Durable

Cast stainless steel, grade 304, provides strength and a long-lasting finish

### Clever

Chamfered shoulders provide mole-grip resistance

### Protected

Anti-drill disc spins if attacked to provide complete cylinder protection





# SUPASECURE™ STAINLESS STEEL

## PULL ESCUTCHEONS



Mila's SupaSecure™ pull escutcheons combine **high quality stainless steel** with **clever security technology** for market-leading **protection**, extreme **strength and durability** and long-lasting **operational performance**.

The range has been independently tested to the toughest industry standards and is **Secured by Design** approved, **BSI Kitemarked**, **ADQ compliant**, **TS007 certified** and is **guaranteed for 25 years**.

### Accreditations.



**Secured By Design**  
Official Police Security Initiative



**BSI Kitemark**  
2 Star Security



**Enhanced Security**  
PAS24: 2022



**Cylinder Enhanced Security**  
TS007 Certified



**Corrosion Resistance**  
BSEN 1670, Grade 5  
Testing exceed 1000 hours salt spray



**Weather Tightness**  
BSEN 6375

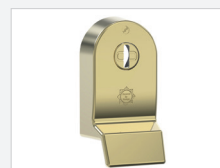


**Approved Document Q**  
Certified

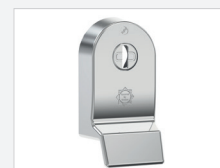
### SUPA™ Stainless Steel Finishes.



Brushed Stainless



Brushed Gold PVD  
Stainless



Polished Stainless



Luna Black PVD  
Stainless



Luna Grey PVD  
Stainless

# SUPASECURE™ STAINLESS STEEL

## PULL ESCUTCHEONS



### Deterrent

Secured by Design logo laser etched onto external escutcheon, BSI Kitemark etched onto internal escutcheon

### Durable

Cast stainless steel, grade 304, provides strength and a long-lasting finish

### Clever

Chamfered shoulders provide mole-grip resistance

### Protected

Anti-drill disc spins if attacked to provide complete cylinder protection





# SUPA™ STAINLESS STEEL

## ESCUTCHEONS

Mila's Supa™ standard escutcheon range combine **high quality stainless steel** and **elegant styling**.

The range is available in **3 designs** - standard, standard pull and square. **Three core stainless steel finishes** include brushed stainless steel, polished stainless steel and polished gold PVD stainless steel as well as **two new stainless steel finishes**; Luna Black PVD stainless and Luna Grey PVD stainless only available on the Pull Escutcheon.

Supa™ escutcheons are **simple to install** and some feature concealed fixings.

### Accreditations.



#### Corrosion Resistance

BSEN 1670, Grade 5  
Testing exceed 1000 hours salt spray



**SUPA™ Pull  
Standard  
Escutcheon**



**SUPA™  
Square  
Escutcheon**

Finally, all of Mila's Supa™ stainless steel escutcheons have been independently tested to BSEN 1670 achieving the **highest grade 5 rating** for **corrosion resistance**. In fact, the range has been tested to **twice** the industry standard requirement achieving **1000 hours** in a salt spray chamber for a **durable, long-lasting finish, guaranteed for 25 years**.

### SUPA™ Stainless Steel Finishes.



Brushed Stainless



Brushed Gold PVD  
Stainless



Polished Stainless



Luna Black PVD  
Stainless\*



Luna Grey PVD  
Stainless\*

\*Available on  
SUPA™ Pull  
Escutcheons only.

# SUPA™ STAINLESS STEEL

## ESCUTCHEONS



#### High Quality Finishes

Grade 304

#### 3 Designs

Standard, pull and square

#### Universal

Suitable for both left and right-handed doors

#### Concealed Fixing

The stainless steel clip-fit cover, conceals fixings in a sturdy nylon bracket (standard and square escutcheons only)



# SUPA™ STAINLESS STEEL

DOOR KNOCKERS & NUMERALS

Mila's Supa™ stainless steel door knockers, letters and numerals combine **high quality stainless steel** and **elegant styling**.

Available in **4 stainless steel finishes**: brushed stainless steel, polished stainless steel, brushed gold PVD stainless steel and polished gold stainless steel.

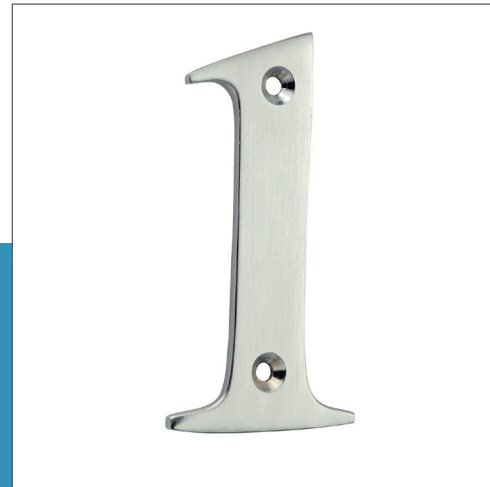
Numerals are offered in **0 to 9**, with letters available from **A to F**, allowing for versatile and stylish personalisation.

## Accreditations.



### Corrosion Resistance

BSEN 1670, Grade 5  
Testing exceed 1000 hours salt spray



All of Mila's Supa™ stainless steel door accessories have been independently tested to BSEN 1670 achieving the **highest grade 5 rating** for **corrosion resistance**. In fact, the range has been tested to **twice** the industry standard requirement achieving **1000 hours** in a salt spray chamber for a **durable, long-lasting finish, guaranteed for 25 years**.

## SUPA™ Stainless Steel Finishes.



Brushed Stainless



Brushed Gold PVD  
Stainless



Polished Stainless



Polished Gold PVD  
Stainless

# SUPA™ STAINLESS STEEL

DOOR KNOCKERS & NUMERALS

## High Quality Finishes




Letters & numerals in grade 304 & 316 stainless steel

## 2 Knockers Designs

With & without hole, concealed or through fix

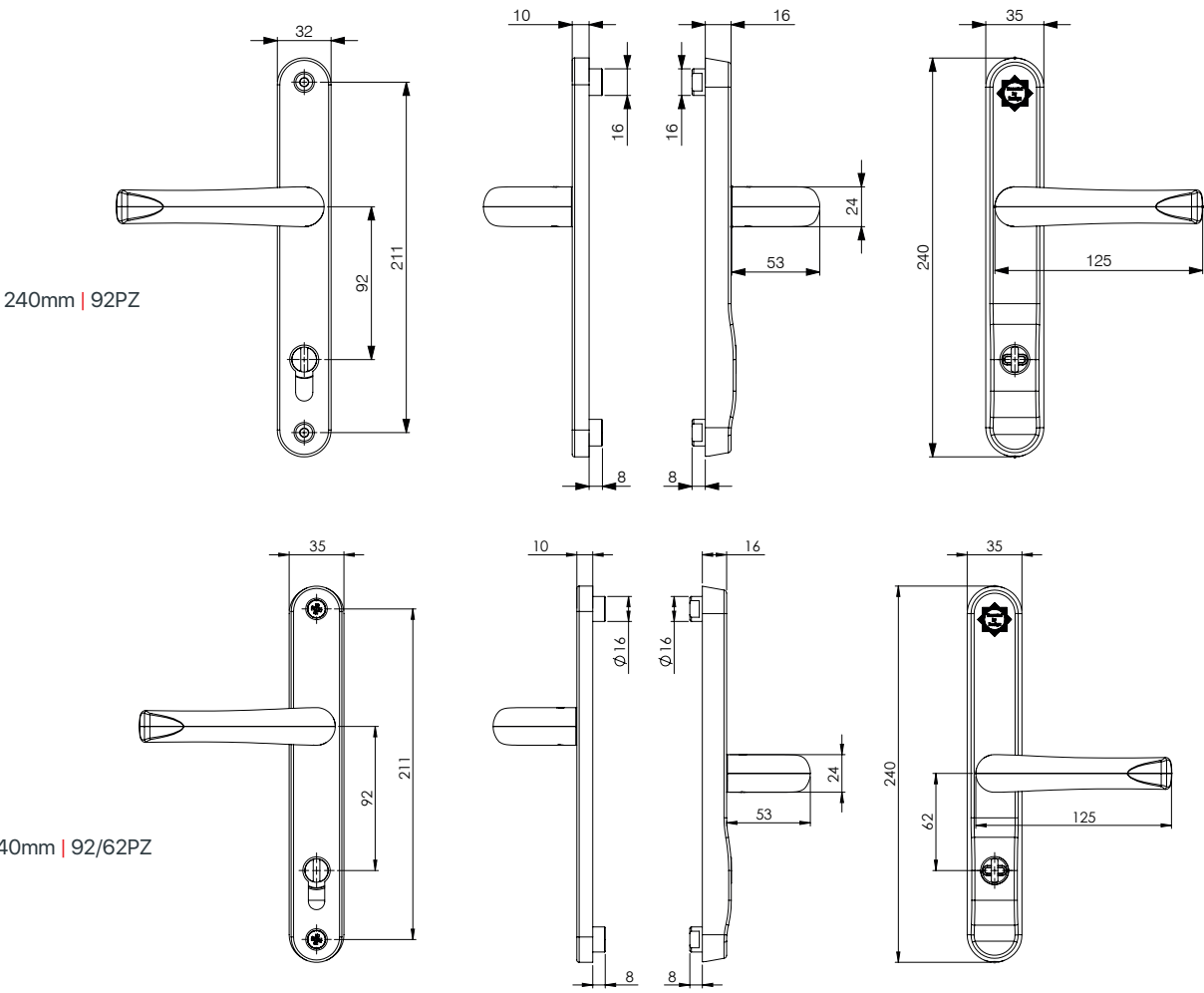


# PART NUMBERS & DIMENSIONAL DRAWINGS.

Page	Product
32	SupaSecure™ Door Handles 
34	Supa™ Door Handles
36	Supa™ Safety Door Handles
38	SupaSecure™ TS008 Letterplate 
39	Supa™ Letterplate
40	Supa™ Round Pull Bars
42	Supa™ Curved Pull Bars
43	Supa™ Square Pull Bars
44	Supa™ Fixing Kits
45	Supa™ Door Knobs
46	Supa™ Fixing Kit Guide
48	SupaSecure™ Escutcheons 
49	Supa™ Escutcheons
50	Supa™ Door Knockers
51	Supa™ Numerals & Letters



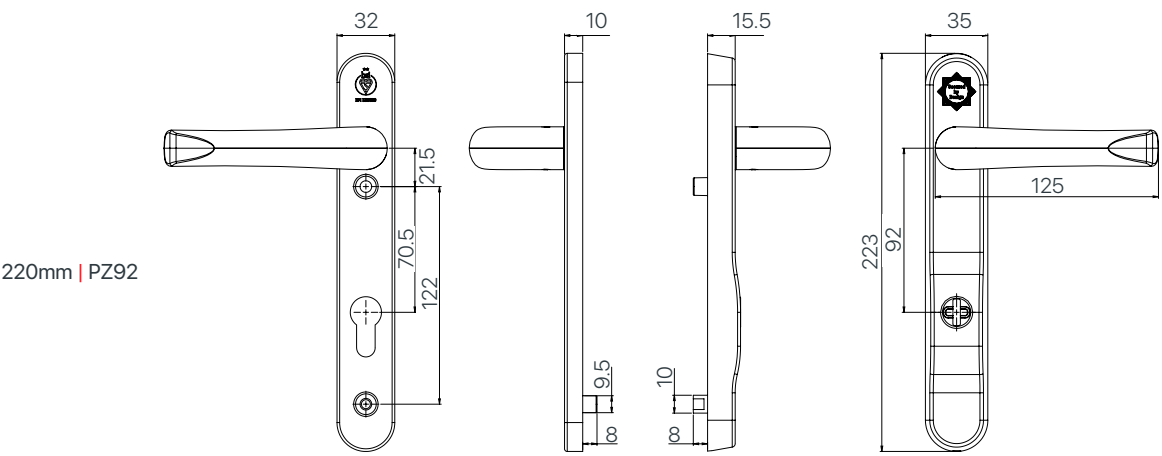
Part Numbers & Dimensional Drawings.



Description	Grade	Variant	Backplate	PZ	Polished Stainless	Brushed Stainless	Polished Gold PVD Stainless	Brushed Gold PVD Stainless
SupaSecure™ Door Handle	304	Lever/Lever	240mm	92	570241	570242	570244	570243
SupaSecure™ Door Handle	304	Lever/Pad	240mm	92	570281	570282	570284	-
SupaSecure™ Door Handle	304	Lever/Pad	240mm	92/62	570251	570252	570254	570253
SupaSecure™ Door Handle	316	Lever/Lever	240mm	92	571241	571242	571244	-
SupaSecure™ Door Handle	316	Lever/Pad	240mm	92/62	571251	571252	571254	-

Supplied complete with screws

Part Numbers & Dimensional Drawings.

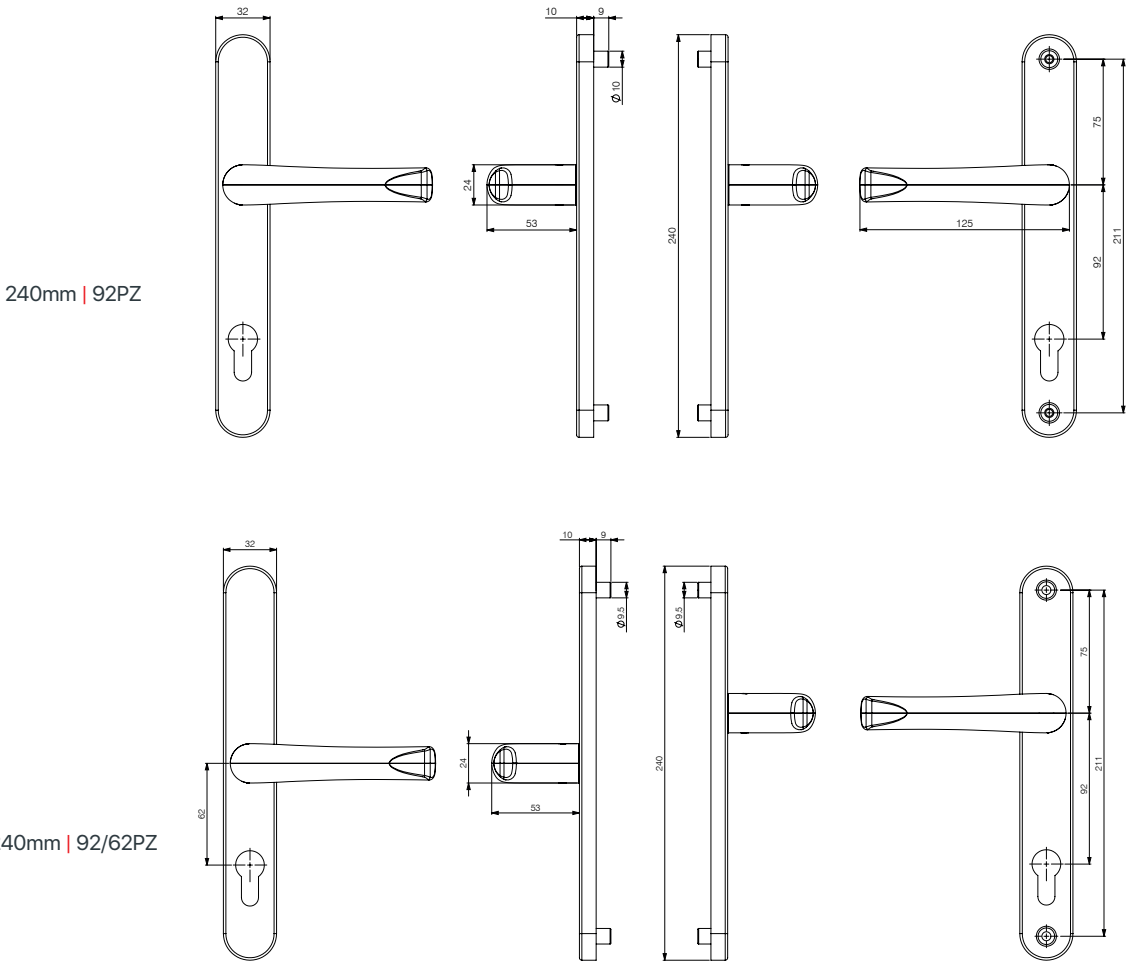


Description	Grade	Variant	Backplate	PZ	Polished Stainless	Brushed Stainless	Polished Gold PVD Stainless
SupaSecure™ Door Handle	304	Lever/Lever	220mm	92	570002	570004	570001

Supplied complete with screws

SUPA™ STAINLESS STEEL  
DOOR HANDLES

Part Numbers & Dimensional Drawings.



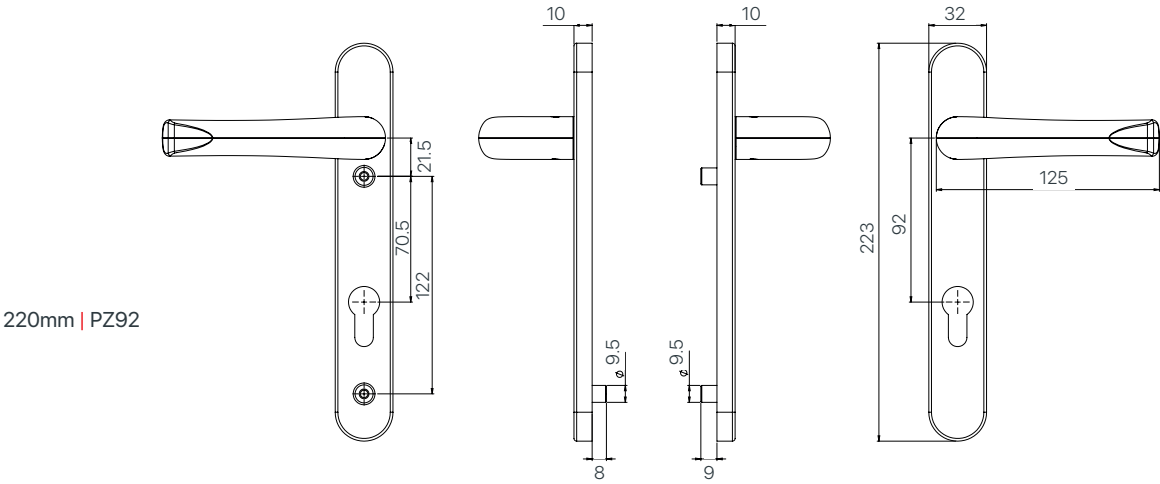
Description	Grade	Variant	Backplate	PZ	Polished Stainless	Brushed Stainless	Polished Gold PVD Stainless	Brushed Gold PVD Stainless
Supa™ Door Handle	304	Lever/Lever	240mm	92	570501N	570502N	570504N	-
Supa™ Door Handle	316	Lever/Lever	240mm	92	571501	571502	571504	-
Supa™ Door Handle	304	Lever/Pad	240mm	92	570511	570512	570514	-
Supa™ Door Handle	304	Lever/Lever	240mm	92/62*	570541	570542	570544	-
Supa™ Door Handle	304	Lever/Pad	240mm	92/62	570551N	570552	570554N	-
Supa™ Door Handle	304	Blank Backplate	240mm	-	570561	570562	570564	570563
Supa™ Door Handle	304	Lever Blank	240mm	-	570571	570572	570574	570573

\*Special order

Supplied complete with screws

SUPA™ STAINLESS STEEL  
DOOR HANDLES

Part Numbers & Dimensional Drawings.

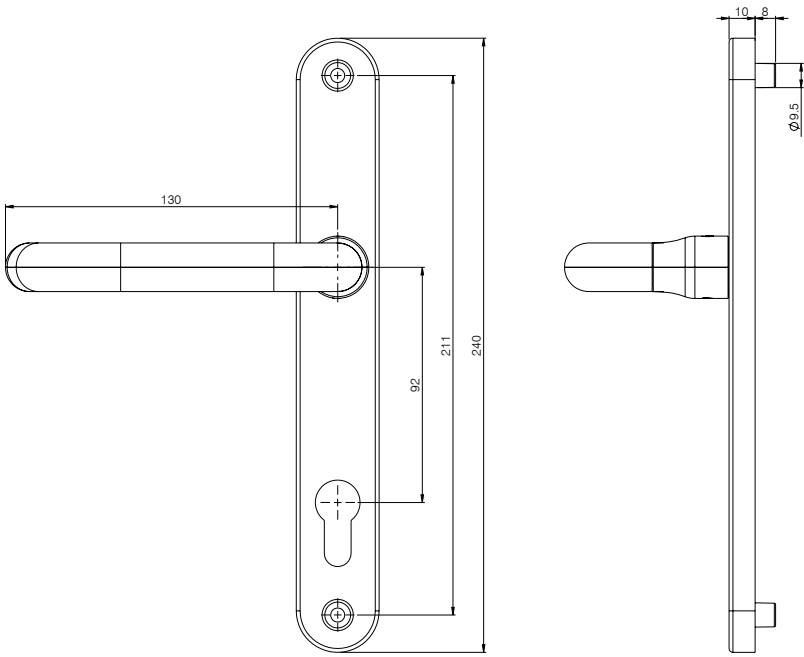
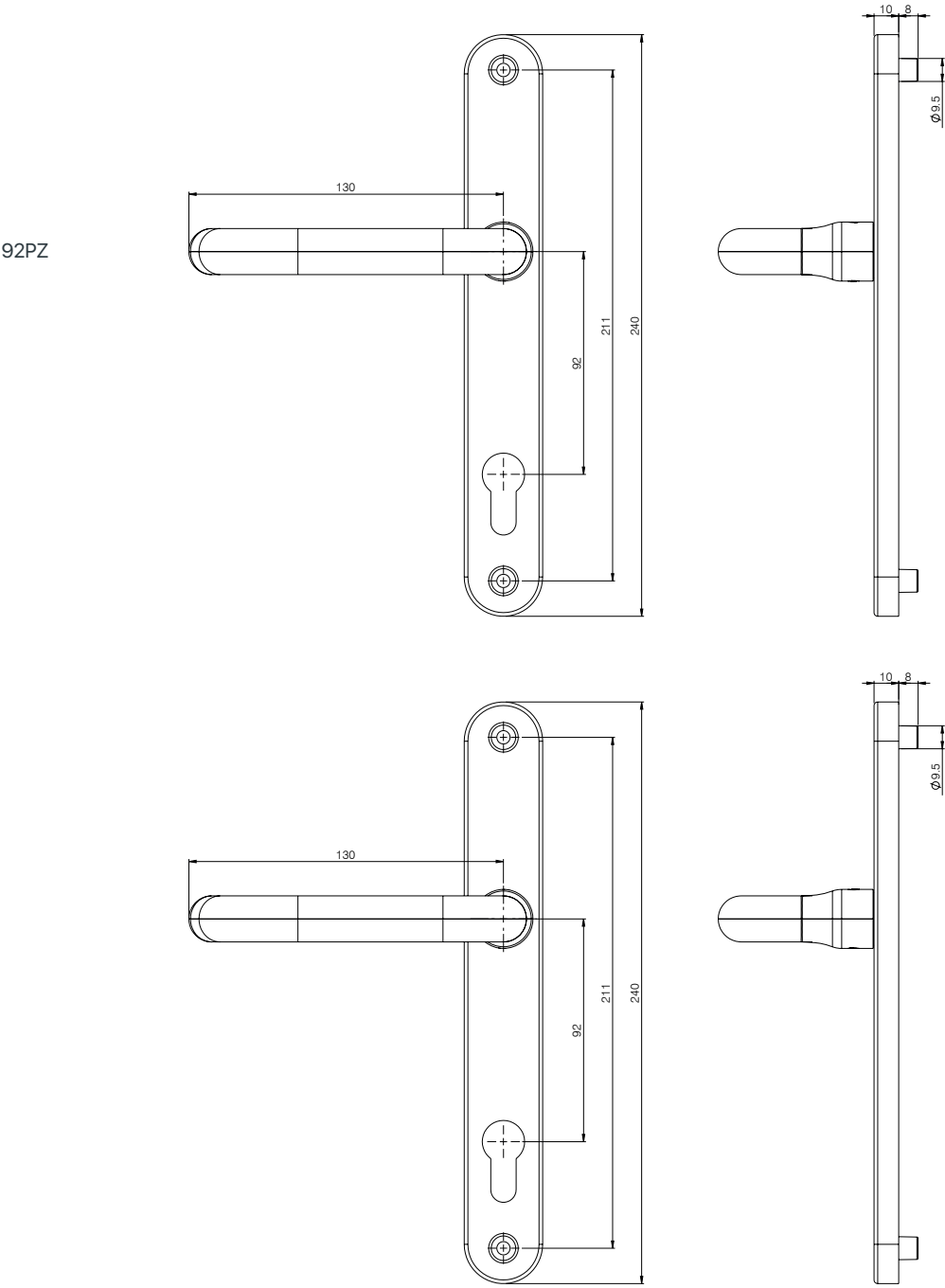


Description	Grade	Variant	Backplate	PZ	Polished Stainless	Brushed Stainless	Polished Gold PVD Stainless
Supa™ Door Handle	304	Lever/Lever	220mm	92	570031	570032	570034

Supplied complete with screws

SUPA™ STAINLESS STEEL  
SAFETY DOOR HANDLES

Part Numbers & Dimensional Drawings.



Description	Grade	Variant	PZ	Polished Stainless	Brushed Stainless	Polished Gold PVD Stainless	Brushed Gold PVD Stainless	Black Powder Coated Stainless	White Powder Coated Stainless
Supa™ Safety Door Handle	304	240mm	92	570701	570702	570704	570703*	570707	570708

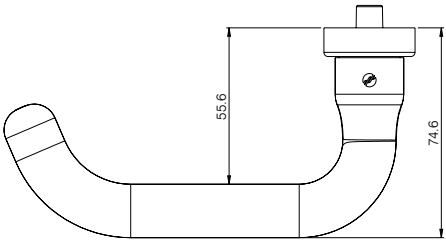
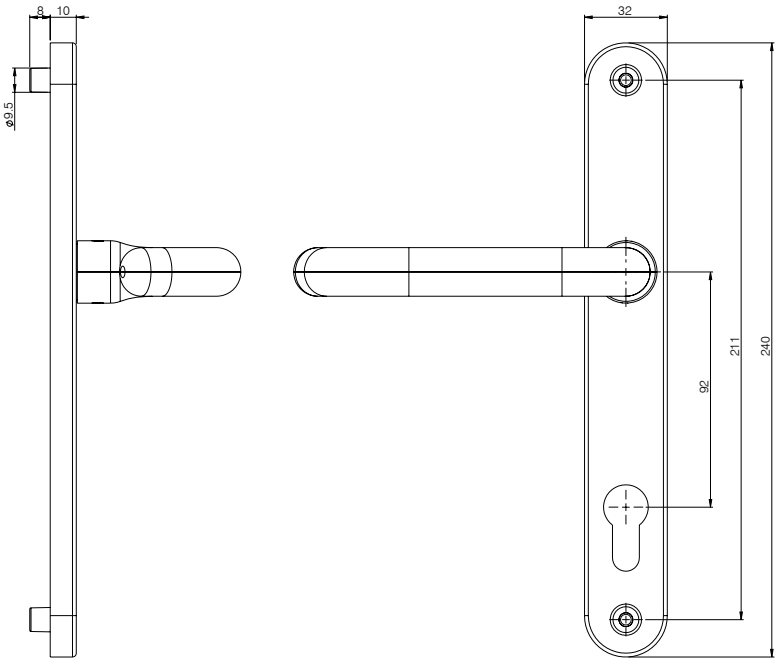
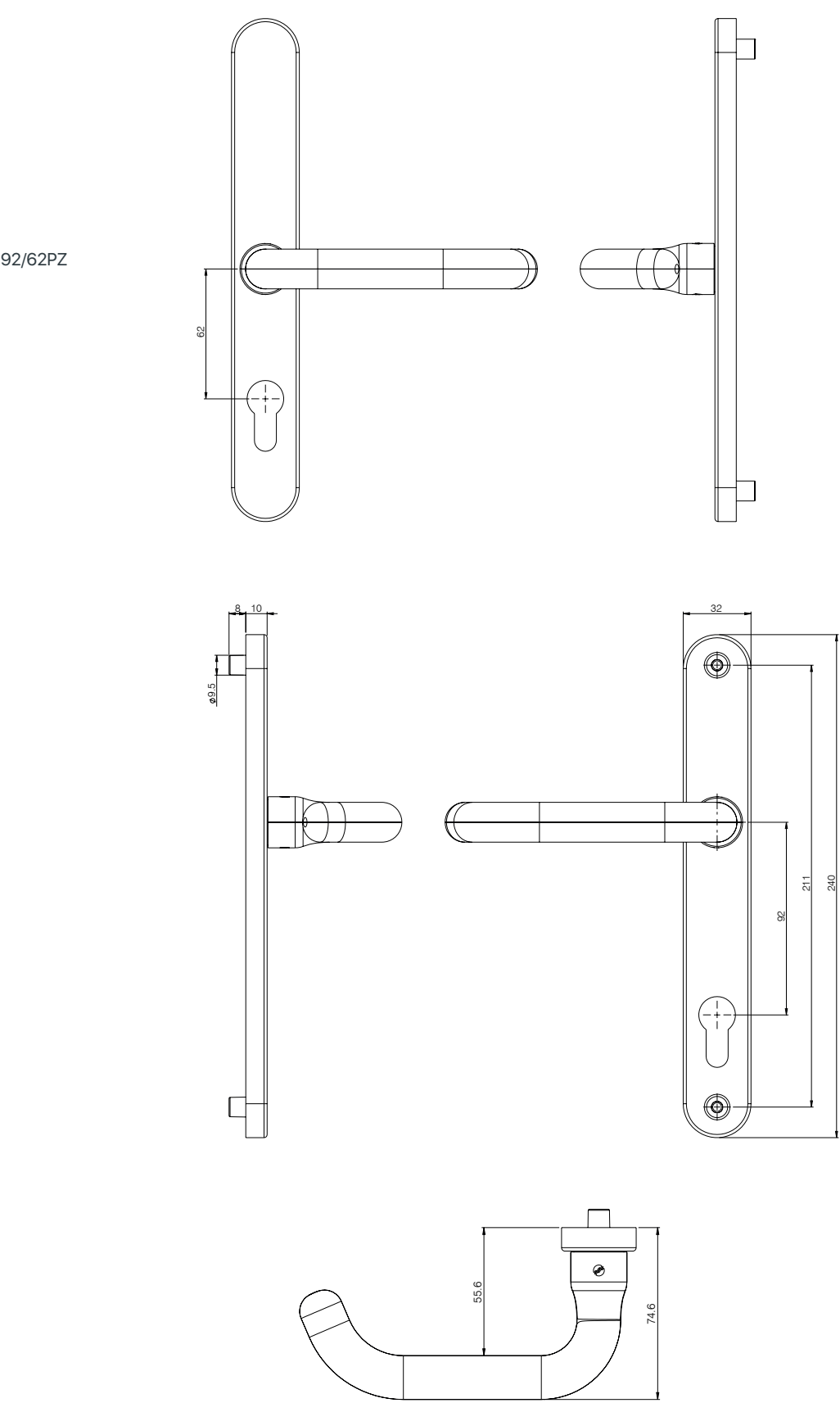
Supa™ Safety Door Handle	304	240mm	92/62	570741	570742	570744	570743*	570747	570748
--------------------------	-----	-------	-------	--------	--------	--------	---------	--------	--------

\*Special order

Supplied complete with screws

SUPA™ STAINLESS STEEL  
SAFETY DOOR HANDLES

Part Numbers & Dimensional Drawings.

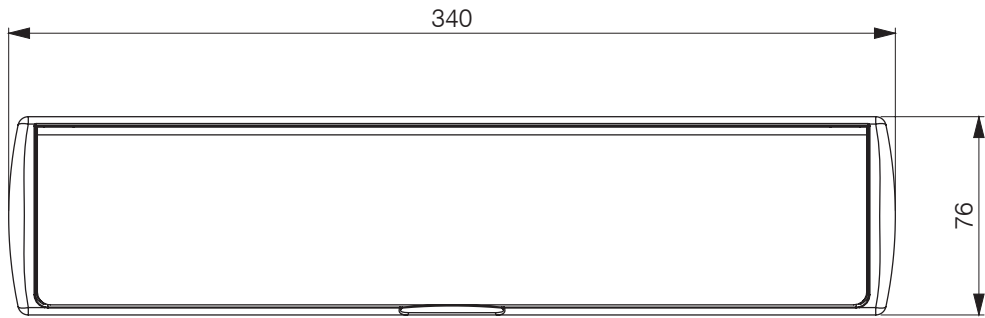




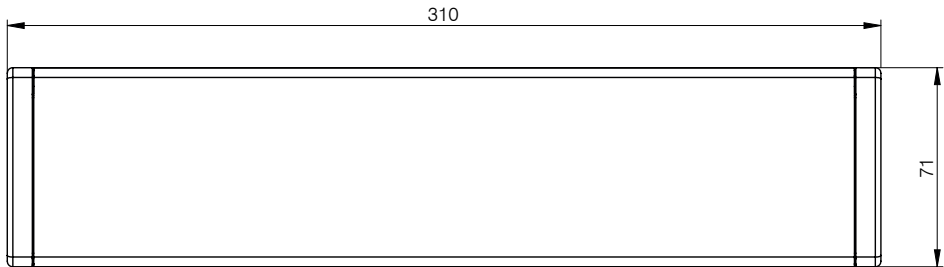
SUPASECURE™ STAINLESS STEEL  
TS008 LETTERPLATES



Part Numbers & Dimensional Drawings.



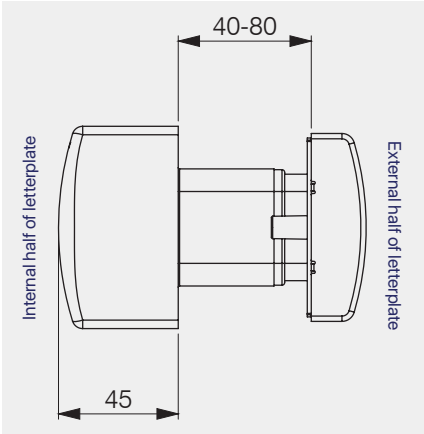
Internal Letterplate



External Letterplate



Aperture



Side View

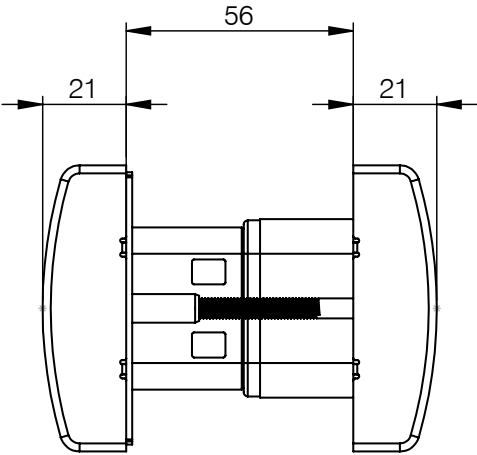
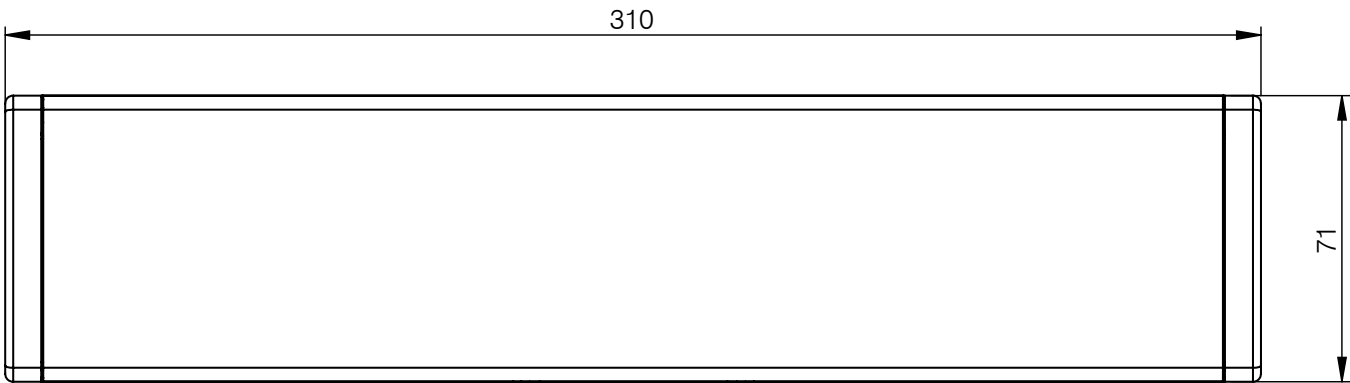
		External Letterplate	External Letterplate	External Letterplate	External Letterplate	External Letterplate	External Letterplate
Description		Polished Stainless	Brushed Stainless	Brushed Gold PVD Stainless	Polished Gold PVD Stainless	Black Powder Coated Stainless	White Powder Coated Stainless
Internal TS008 Letterplate	Polished Chrome	TS008 PSS/CH	-	-	-	-	-
Internal TS008 Letterplate	Polished Gold	-	-	-	TS008 GSS/G	-	-
Internal TS008 Letterplate	Satin Silver	-	TS008 BSS/SS	-	-	-	-
Internal TS008 Letterplate	Black	-	-	-	-	TS008 BLKSS/BLK	-
Internal TS008 Letterplate	White	TS008 PSS/WHT	TS008 BSS/WHT	TS008 BGSS/WHT	TS008 GSS/WHT	TS008 BLKSS/WHT	TS008 WSS/WHT

Note. Additional colour combinations available - please contact the Mila sales team on 01327 312 400

Supplied complete with screws

SUPA™ STAINLESS STEEL  
LETTERPLATES

Part Numbers & Dimensional Drawings.

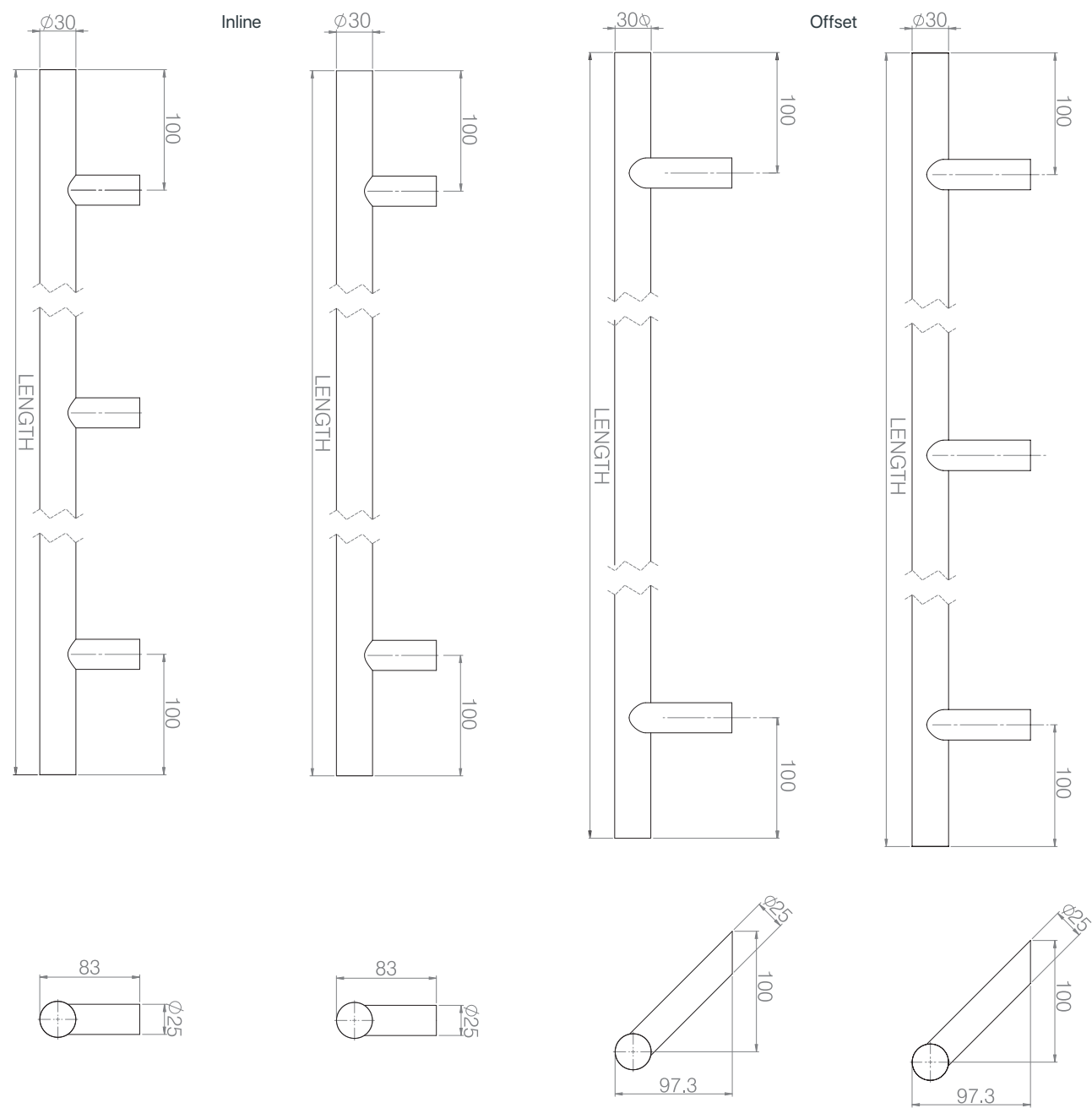


Description	Grade	Polished Stainless	Brushed Stainless	Polished Gold PVD Stainless	Brushed Gold PVD Stainless	Luna Black PVD Stainless	Luna Grey PVD Stainless
Supa™ Letterplate	304	112001	112002	112004	112003	112006	112000

Description	Part Number
Supa™ Letterplate Sleeve Extender & Accs. 61-91mm	112090

Supplied complete with screws

Dimensional Drawings.



Fixing kit required - see page 44 for details

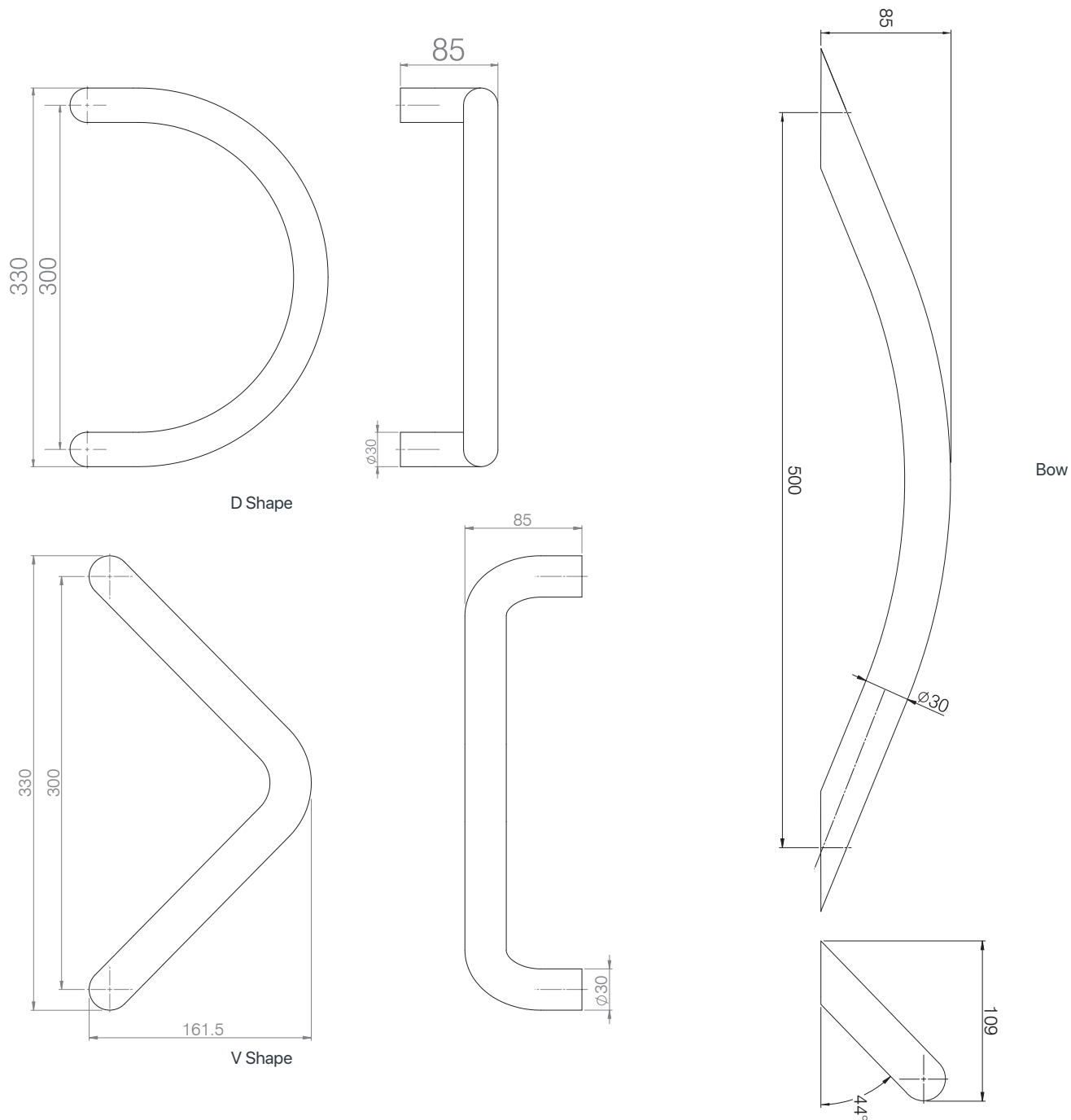
Part Numbers.

Description	Variant	Grade	Brushed Stainless	Brushed Stainless	Brushed Stainless	Brushed Stainless	Brushed Stainless	Brushed Stainless	Brushed Stainless	Brushed Stainless
			400mm	600mm	800mm	1000mm	1200mm	1400mm	1600mm	1800mm
Supa™ Pull Bar	Offset 60°	304	573002	573012	573022	573032	573042	573052	573062	573072
Supa™ Pull Bar	Offset 45°	304	573006	573016	573026	573036	573046	573056	573066	573076
Supa™ Pull Bar	Inline	304	573102	573112	573122	573132	573142	573152	573162	573172

Description	Variant	Grade	Luna Black PVD Stainless	Luna Grey PVD Stainless	Luna Black PVD Stainless	Luna Grey PVD Stainless	Luna Black PVD Stainless	Luna Grey PVD Stainless
			800mm		1200mm		1800mm	
Supa™ Pull Bar	Offset 60°	304	573025	573029	573045	573049	573075	573079
Supa™ Pull Bar	Inline	304	573125	573129	573145	573149	573175	573179

Fixing kit required - see page 44 for details

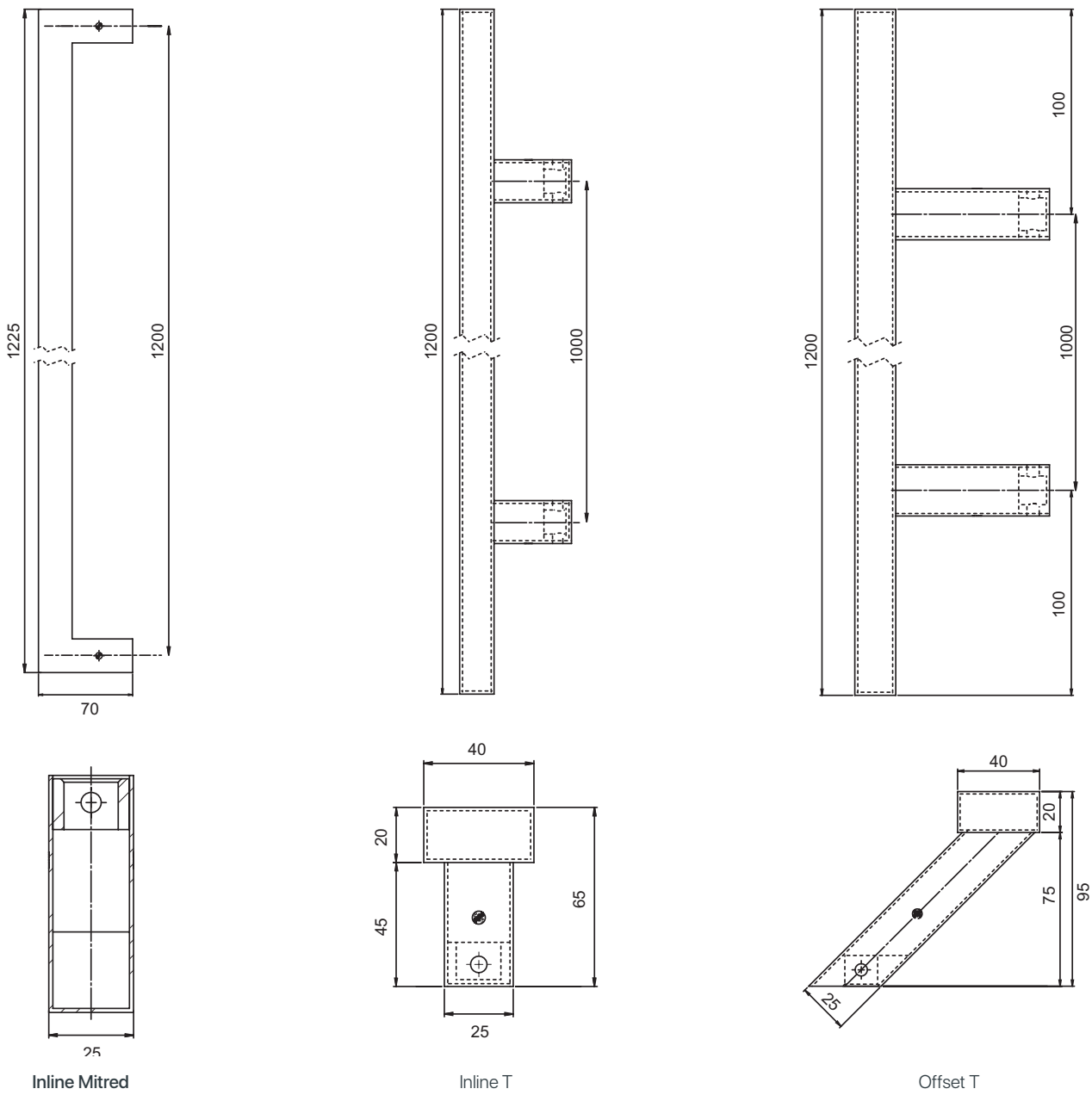
Part Numbers & Dimensional Drawings.



Description	Variant	Grade	Overall Length	Fixing Centers	Fixing Points	Brushed Stainless
Supa™ Curved Pull Bar	D	304	330mm	300mm	2	573202
Supa™ Curved Pull Bar	V	304	330mm	300mm	2	573212
Supa™ Curved Pull Bar	Bow	304	587mm	500mm	2	573222

Fixing kit required - see page 44 for details

Part Numbers & Dimensional Drawings.



Description	Variant	Grade	Length	Fixing Points	Brushed Stainless
Supa™ Square Pull Bar	Inline Mitred	316	1200mm	2	572102
Supa™ Square Pull Bar	Inline T	316	1200mm	2	572112
Supa™ Square Pull Bar	Offset T	316	1200mm	2	572122

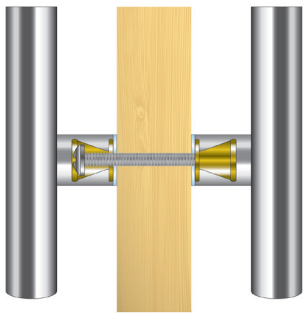
Fixing kit required - see page 44 for details



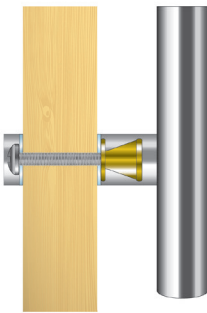
SUPA™ STAINLESS STEEL  
FIXING KITS



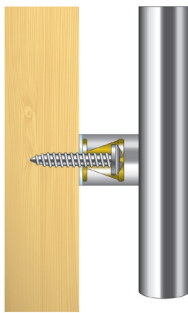
Part Numbers & Dimensional Drawings.



Back-to-Back Fixing



Through Fixing

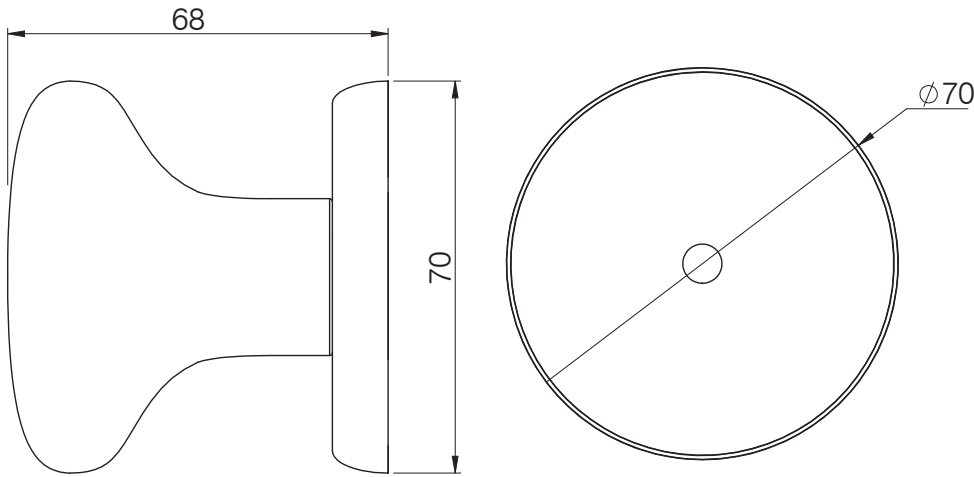


Concealed Fixing

Description	Type	Grade	Standard	Luna Black PVD Stainless	Luna Grey PVD Stainless
Supa™ Pull Bar Fixing Kit	Through	304	573302	573029	573025
Supa™ Pull Bar Fixing Kit	Concealed	304	573320	-	-
Supa™ Pull Bar Fixing Kit	Back-to-back, 44mm - 56mm slab	304	573315	-	-
Supa™ Pull Bar Fixing Kit	Back-to-back, 64mm - 76mm slab	304	573316	-	-
Supa™ Pull Bar Fixing Kit	Back-to-back, 74mm - 85mm slab	304	573317	-	-

SUPA™ STAINLESS STEEL  
DOOR KNOBS

Part Numbers & Dimensional Drawings.



Description	Variant	Grade	Duo Stainless	Duo Gold	Brushed Stainless	Luna Black PVD Stainless	Luna Grey PVD Stainless
Supa™ Door Knob	Through Fix	304	574000	574003	574002	574006	574009
Supa™ Door Knob	Concealed Fix	304	574010*	574013*	574012	574016	574019

\*Special order

# SUPA™ STAINLESS STEEL

FIXING KIT GUIDE

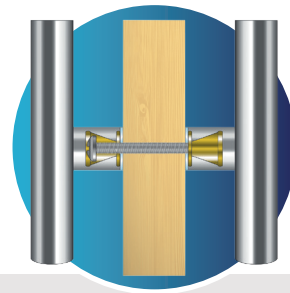
## Back to Back Installation.

### 400mm to 1200mm

Pull bars have **2 fixing points**

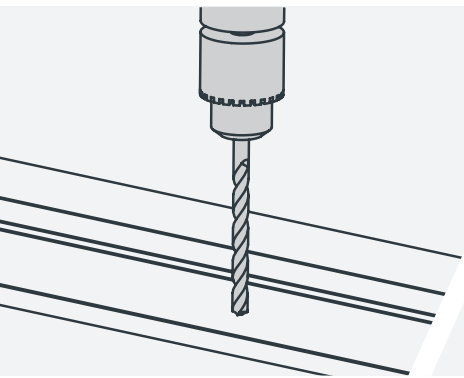
### 1400mm to 1800mm

Pull bars have **3 fixing points** and require an additional fixing pack



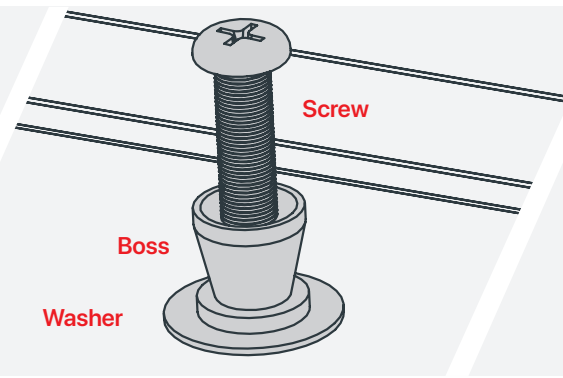
### Important.

Choose the fixing location on your door carefully to ensure sufficient gearbox and cylinder clearance



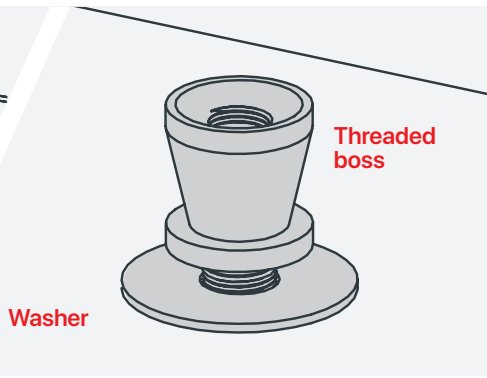
**1. Measure and mark both sides of the door for accuracy**

Drill an 8mm hole into the door at the required locations.



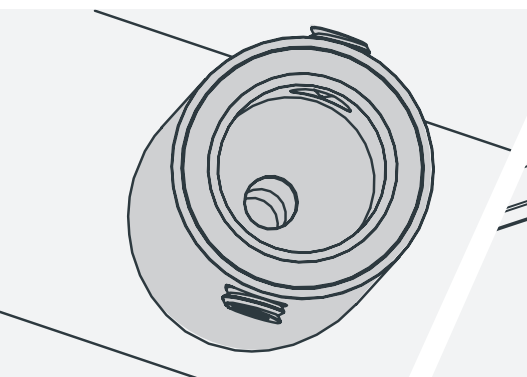
**2. From the internal side of the door;**

Slide a non-threaded boss (flat base towards the door) onto the M8 screw, followed by a clear plastic washer. Locate onto door, into one of drilled holes.



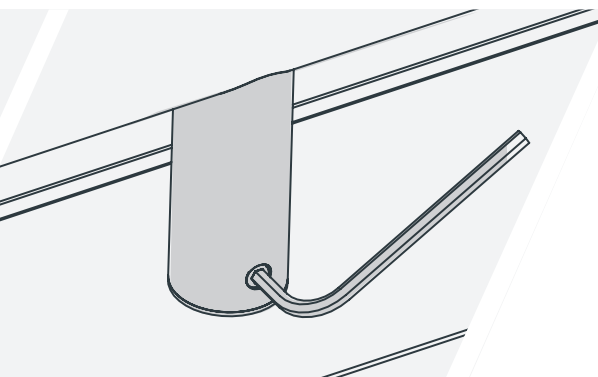
**3. From the external side of the door;**

Position a plastic washer over the screw followed by the threaded boss (flat base against the door) and tighten with PH3 screwdriver - do not over tighten. Repeat for remaining fixings positions.



**4. On the pull bar;**

Ensure grub screws are fully out before fitting over boss.



**5. Locate the pull bar over the boss,**

Tighten both grub screws on both to secure.

# SUPA™ STAINLESS STEEL

FIXING KIT GUIDE

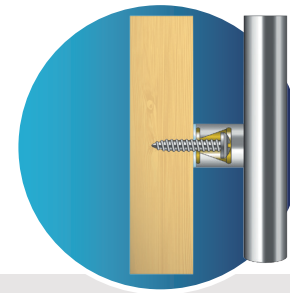
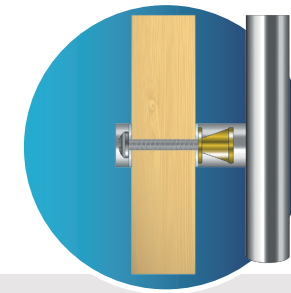
## Through & Concealed Installation.

### 400mm to 1200mm

Pull bars have **2 fixing points**

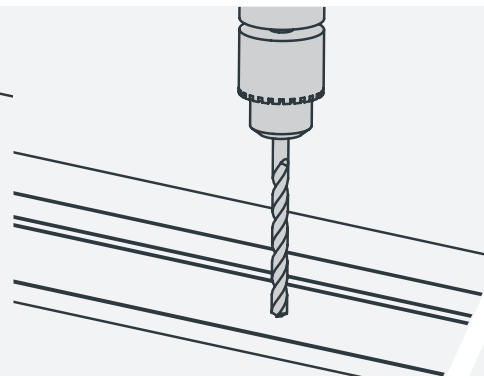
### 1400mm to 1800mm

Pull bars have **3 fixing points** and require an additional fixing pack



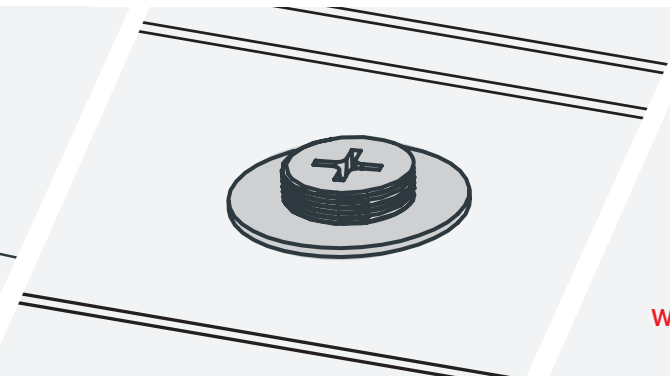
### Important.

Choose the fixing location on your door carefully to ensure sufficient gearbox and cylinder clearance



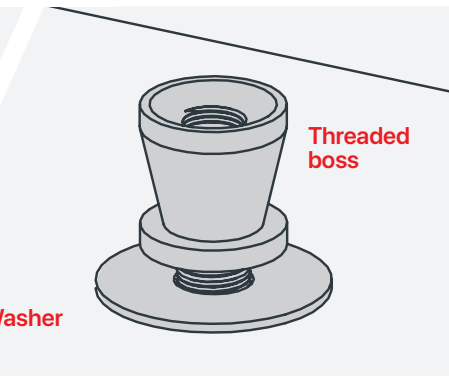
**1. Through fix - Measure and mark both sides of the door for accuracy**

Drill an 8mm hole into the door at the required locations.



**2. Through fix - From the internal side of the door;**

Slide a clear plastic washer onto the M8 screw and locate onto door, into one of drilled holes.

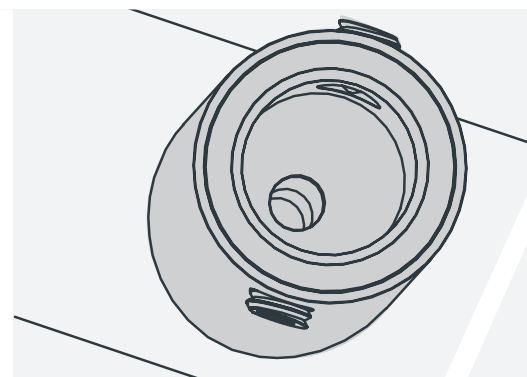


**3. Through fix - From the external side of the door;**

Position a plastic washer over the screw followed by the threaded boss (flat base against the door)

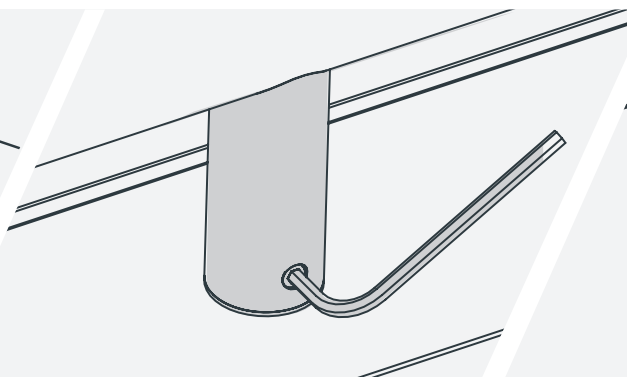
**Concealed fix - From the external side of the door;**  
Thread the screw through the boss and a washer and locate the flat base against door.

Tighten with PH3 screwdriver - do not over tighten. Repeat for remaining fixings positions.



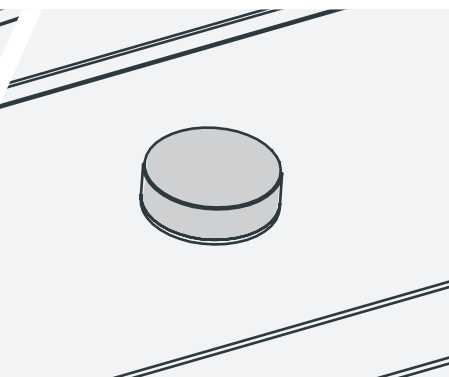
**4. On the pull bar;**

Ensure grub screws are fully out before fitting over boss.



**5. Locate the pull bar over the boss,**

Tighten both grub screws on both to secure.



**6. Through fix - From the internal side of the door;**

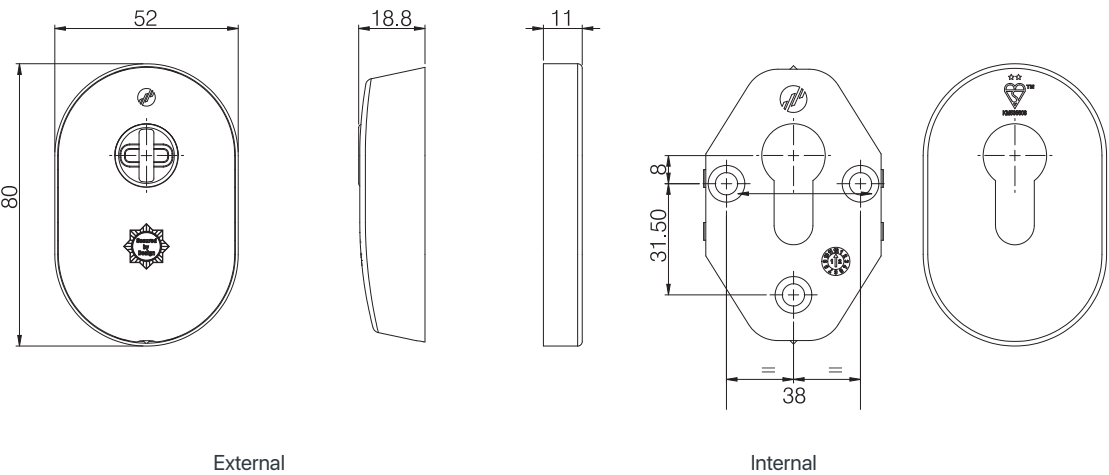
Screw disc over screw and washer.

SUPASECURE™ STAINLESS STEEL  
ESCUTCHEONS

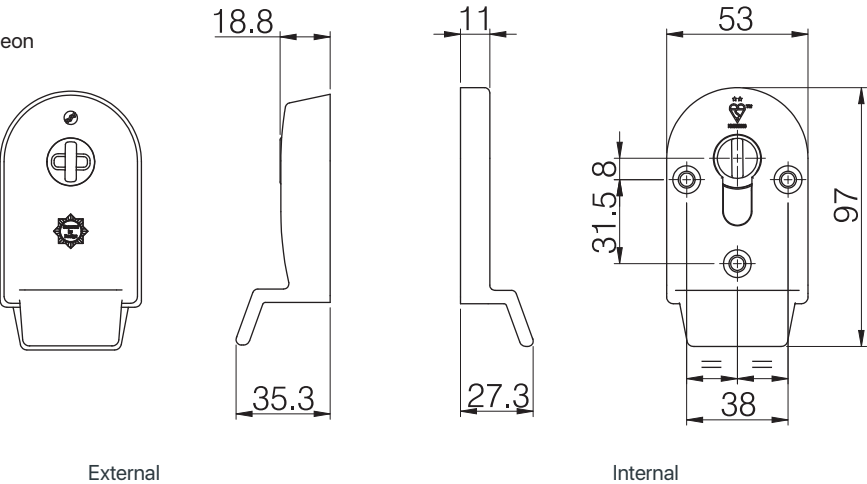


Part Numbers & Dimensional Drawings.

SupaSecure™ Escutcheon



SupaSecure™ Pull Escutcheon



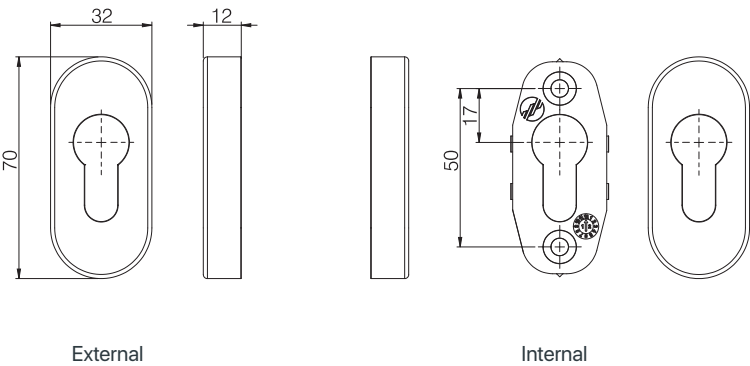
Description	Grade	Polished Stainless	Brushed Stainless	Polished Gold PVD Stainless	Luna Black PVD Stainless	Luna Grey PVD Stainless
SupaSecure™ Escutcheon	304	579081	579082	579084	579066	579060
SupaSecure™ Pull Escutcheon	304	579061	579062	579064	579086	579080

Supplied complete with screws

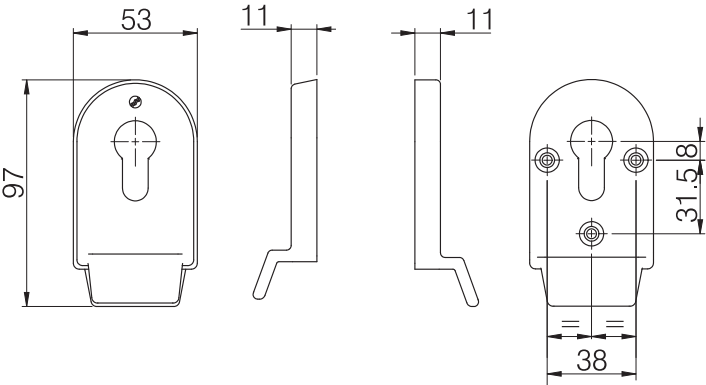
SUPA™ STAINLESS STEEL  
ESCUTCHEONS

Part Numbers & Dimensional Drawings.

Supa™ Escutcheon



Supa™ Pull Escutcheon



Description	Grade	Polished Stainless	Brushed Stainless	Polished Gold PVD Stainless	Luna Black PVD Stainless	Luna Grey PVD Stainless
Supa™ Escutcheon	304	579001	579002	579004	-	-
Supa™ Escutcheon	316	579021	579022	579024	-	-
Supa™ Pull Escutcheon	304	579041	579042	579044	579046	579040
Supa™ Square Escutcheon	316	-	579032	-	-	-

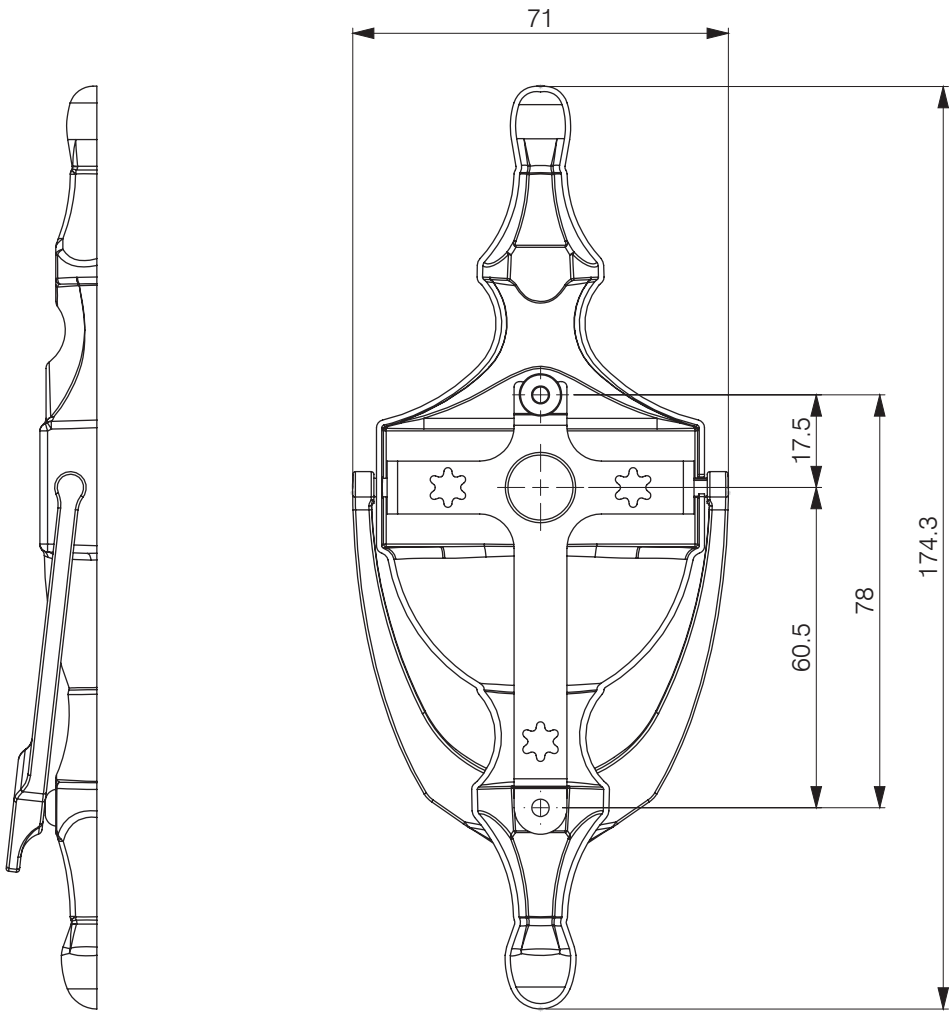
Supplied complete with screws



SUPA™ STAINLESS STEEL

DOOR KNOCKERS

Part Numbers & Dimensional Drawings.



Description	Grade	Size	Fixing	Polished Stainless	Brushed Stainless	Polished Gold PVD Stainless	Brushed Gold PVD Stainless
Supa™ Urn Kocker	304	6"	Through	590491	590492	590494	-
Supa™ Urn Kocker	304	6"	Concealed	590461	590462	590464	590463
Supa™ Urn Kocker with hole	304	6"	Through	590531	590532	590534	-
Supa™ Urn Kocker with hole	304	6"	Concealed	590571	590572	590574	590573

Supplied complete with screws

SUPA™ STAINLESS STEEL

NUMERALS & LETTERS

Part Numbers & Dimensional Drawings.

Description	Number	Polished Stainless Grade 304	Brushed Stainless Grade 316	Polished Gold PVD Stainless Grade 304	Brushed Gold PVD Stainless Grade 304
Supa™ Numeral	0	578040	578000	578060	578080
Supa™ Numeral	1	578041	578001	578061	578081
Supa™ Numeral	2	578042	578002	578062	578082
Supa™ Numeral	3	578043	578003	578063	578083
Supa™ Numeral	4	578044	578004	578064	578084
Supa™ Numeral	5	578045	578005	578065	578085
Supa™ Numeral	6	578046	578006	578066	578086
Supa™ Numeral	7	578047	578007	578067	578087
Supa™ Numeral	8	578048	578008	578068	578088
Supa™ Numeral	9	578049	578009	578069	578089
Supa™ Letter	A	578050	578010	578070	578090
Supa™ Letter	B	578051	578011	578071	578091
Supa™ Letter	C	578052	578012	578071	578092
Supa™ Letter	D	578053	578013	578071	578093
Supa™ Letter	E	578054	578014	578071	578094
Supa™ Letter	F	578055	578015	578071	578095

