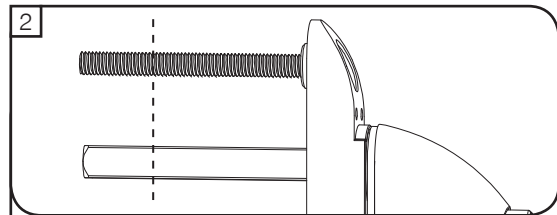
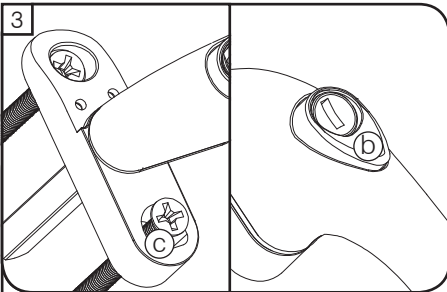


First check that you have the correct handle offset with the handle offset to the glass side, as shown above (a). Ensure the window and the espag handle are in the closed position. Insert a fixing screw into the top fixing hole (b).

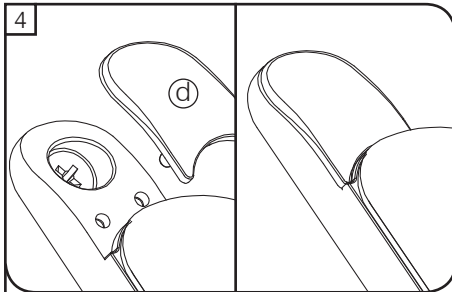
## ProLinea Offset Espag Handle - Fitting Instructions



If the spindle and screws are too long they can be carefully cut to size with a hacksaw. Always wear the correct protective equipment when using tools.



Press button (b) and rotate lever 90° to reveal bottom fixing hole (c) (caution window will open). Insert screw & carefully tighten.



Close lever. Push the screw cover (d) into location holes. Ensure cover sits flat, as diagram.

### **Maintenance:**

Window handles should be cleaned with a soft, dry cloth. If further cleaning is required we recommend a mild solution of warm, soapy water on a soft cloth. Dry thoroughly afterwards.