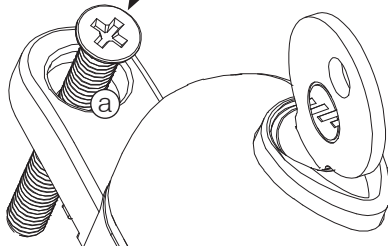


1

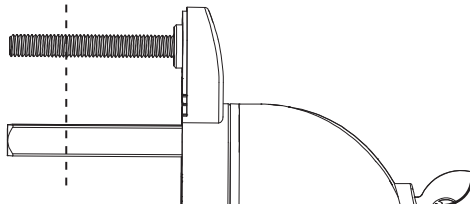


Ensure the window and the espag handle are in the closed position. Insert a fixing screw into the top fixing hole as shown above (a).

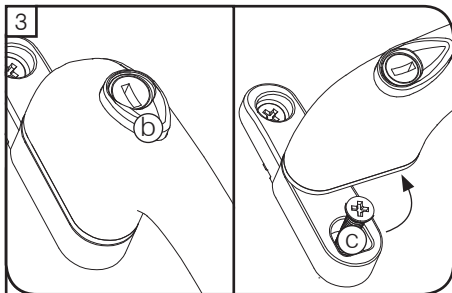
Grip Espag Handle - Fitting Instructions



2

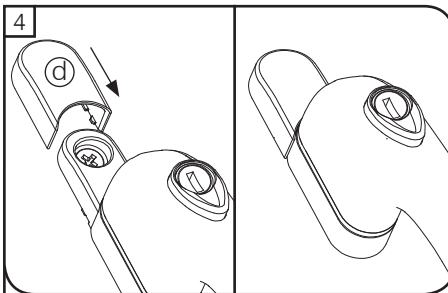


If the spindle and screws are too long they can be carefully cut to size with a hacksaw. Always wear the correct protective equipment when using tools.



Press button (b) and rotate lever 90° to reveal bottom fixing hole (c) (caution window will open). Insert screw & carefully tighten.

17.05.2016



Close lever. Slide the screw cover (d) into position. Ensure cover sits flat, as shown in the diagram above.

Maintenance:

Window handles should be cleaned with a soft, dry cloth. If further cleaning is required we recommend a mild solution of warm, soapy water on a soft cloth. Dry thoroughly afterwards.