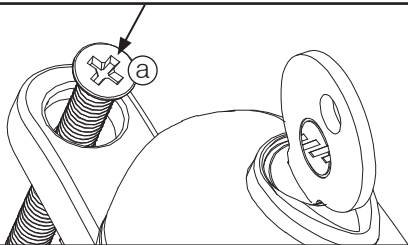


Fitting Instructions - Espag Handle

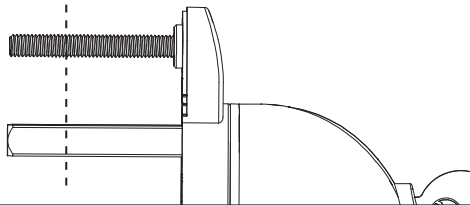


1

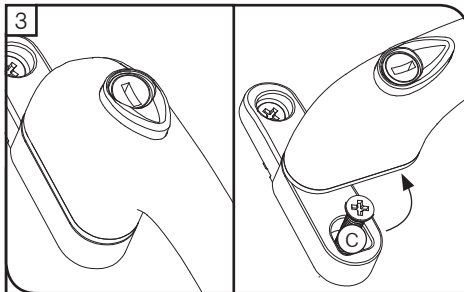


Ensure the window and the espag handle are in the closed position. Insert a fixing screw into the top fixing hole as shown above (a).

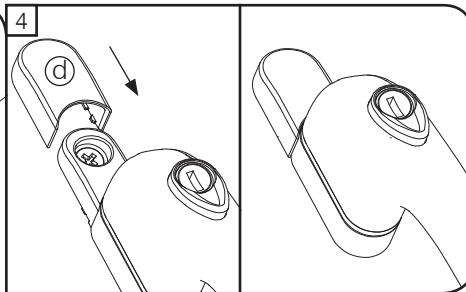
2



If the spindle and screws are too long they can be carefully cut to size with a hacksaw. Always wear the correct protective equipment when using tools.



Press button (b) and rotate lever 90° to reveal bottom fixing hole (c) (caution window will open). Insert screw & carefully tighten.



Close lever. Slide the screw cover (d) into position. Ensure cover sits flat, as shown in the diagram above.

Maintenance:

To ensure that your product maintains its high quality finish please;

DO wipe regularly with a soft, damp cloth to remove any finger prints. We recommend that you only use warm soapy water with a lint free cloth. Wipe dry with a soft clean cloth.

DON'T use abrasive cleaners or scouring pads, bleach or solvents.