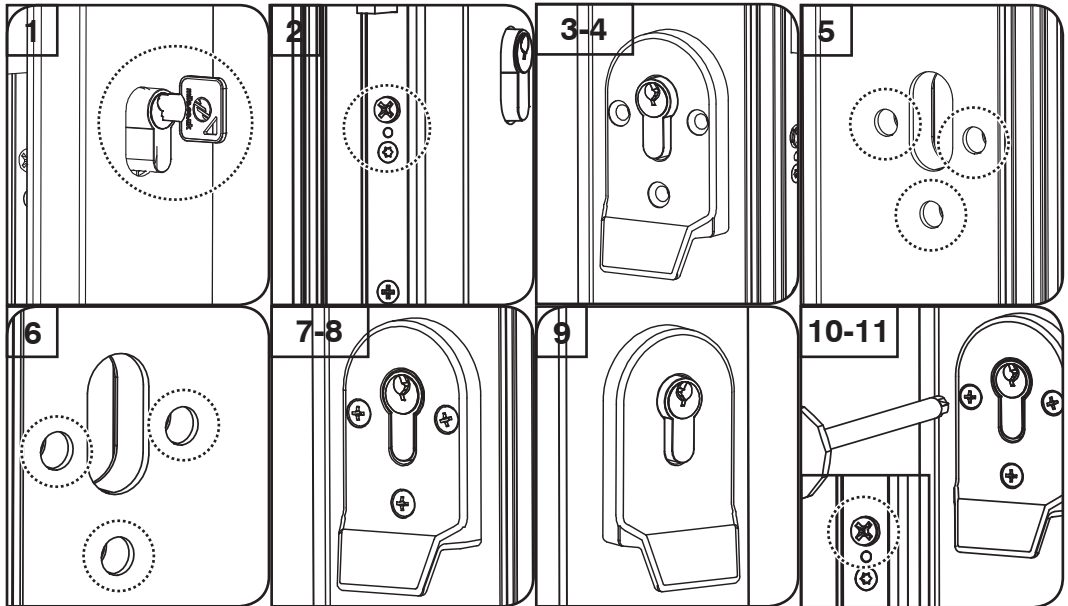


Fitting Instructions

Supa Pull Escutcheon

1. Check operation of cylinder - it should operate normally from both sides of the door.
2. Loosen the cylinder fixing screw which is located on the side of the door, on the door lock face plate.
3. On the internal side of the door, position the internal escutcheon over the cylinder. With a pencil carefully mark through all screw holes to the internal side of the door. **Repeat on external side of door.**
4. Remove both the cylinder and lock from door.
5. Carefully drill the 3 x 6mm holes as marked from the internal side of the door taking care not to drill through to external door face.
6. Repeat with the markings on the external side of the door. This should avoid any hole misalignment.
7. Re-fit the door lock and cylinder, leaving the cylinder screw loose.
8. Slide the internal escutcheon over the cylinder on the internal door side, and insert the appropriate length screws.
9. On the external door side slide the external escutcheon over the cylinder, ensuring all three screws align with the screw holes on the reverse of the escutcheon.
10. Position the external escutcheon against the door and tighten the 3 screws on the internal side taking care not to over tighten.
11. Re-tighten the cylinder screw.

THESE ESCUTCHEONS ARE SUITABLE FOR MATERIALS RANGING FROM 44 TO 48MM IN THICKNESS



Maintenance

To ensure that your SUPA stainless steel product maintains its high quality finish please;
DO wipe regularly with a soft, damp cloth to remove any finger prints. We recommend that you only use warm soapy water with a lint free cloth. Wipe dry with a soft clean cloth.
DON'T use abrasive cleaners or scouring pads, bleach or solvents.

ALWAYS USE APPROPRIATE PPE WHEN USING TOOLS

