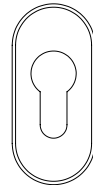


Fitting Instructions

Supa Escutcheon

1. Check operation of cylinder - it should operate normally from both sides of the door.
2. Locate the cylinder fixing screw which is positioned on the side of the door, on door lock faceplate and loosen.
3. On the internal side of the door, position the body of the internal escutcheon over the cylinder.
4. Using the screw holes as guides, carefully drill pilot holes using a 2mm drill bit. Ensure the drill depth is not greater than the door thickness.
5. Using two suitable self tapping screws, fasten the ABS body to the door. We recommend that the screw length is no greater than 25mm, this should avoid any screw clash.
6. To complete installation, firmly push the stainless steel metal cover over the ABS body, until you feel it click into place. Repeat for external door side and re-tighten the cylinder fixing screw.

Pack Contents

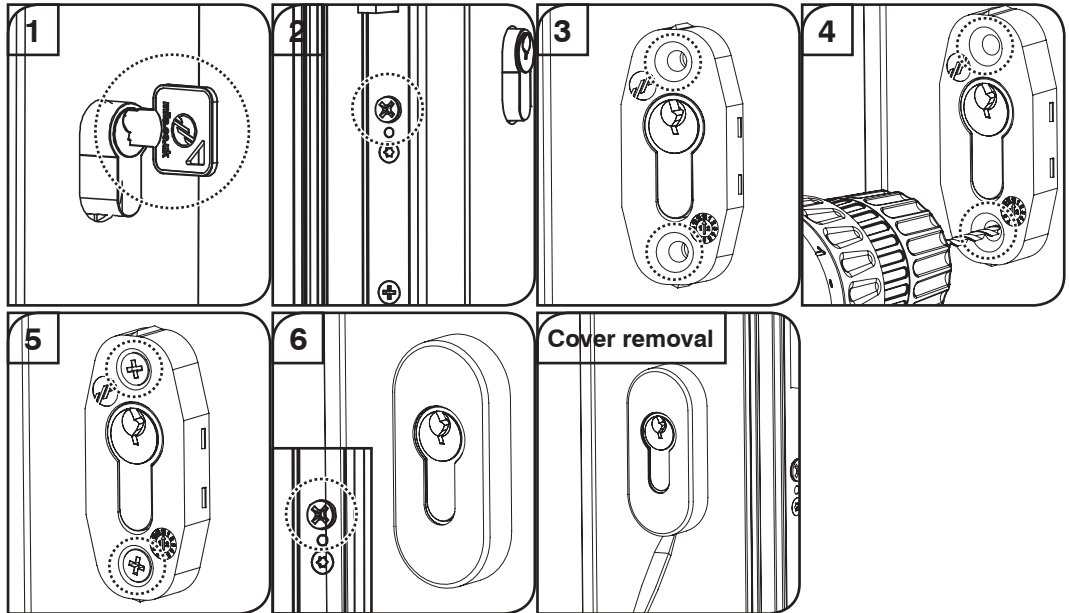


2x
Stainless
Steel Cover



2x
ABS Body

Cover Removal: Using a small blade screw driver, gently insert under the stainless steel cover and carefully twist to remove the stainless steel cover from the ABS body.



Maintenance

To ensure that your SUPA stainless steel product maintains its high quality finish please;

DO wipe regularly with a soft, damp cloth to remove any finger prints. We recommend that you only use warm soapy water with a lint free cloth. Wipe dry with a soft clean cloth.

DON'T use abrasive cleaners or scouring pads, bleach or solvents.

ALWAYS USE APPROPRIATE PPE WHEN USING TOOLS

