

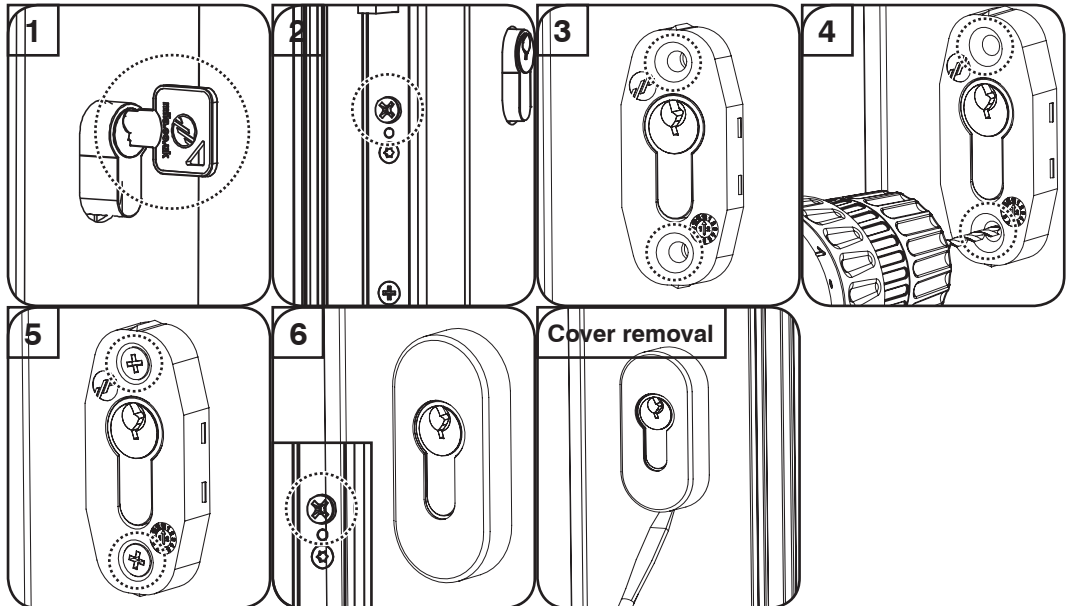
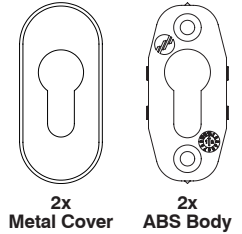
## Fitting Instructions

# ProLinea Escutcheon

1. Check operation of cylinder - it should operate normally from both sides of the door.
2. Loosen the cylinder fixing screw which is located on the side of the door, on the door lock face plate.
3. On the internal side of the door, position the body of the internal escutcheon over the cylinder.
4. Using the screw holes as guides, carefully drill pilot holes using a 2mm drill bit. Ensure the drill depth is not greater than the door thickness.
5. Using two suitable self tapping screws, fasten the escutcheon body to the door. We recommend that the screw length is no greater than 25mm, this should avoid any screw clash.
6. To complete installation, firmly push the internal metal cover over the ABS body until you feel it click into place. Repeat for external door side and re-tighten the cylinder fixing screw.

**Cover Removal:** Using a small blade screw driver, gently insert under the metal cover and carefully twist to remove the metal cover from the ABS body.

### Pack Contents



## Maintenance

To ensure that your product maintains its high quality finish please;

DO wipe regularly with a soft, damp cloth to remove any finger prints. We recommend that you only use warm soapy water with a lint free cloth. Wipe dry with a soft clean cloth.

DON'T use abrasive cleaners or scouring pads, bleach or solvents.

ALWAYS USE APPROPRIATE PPE WHEN USING TOOLS

