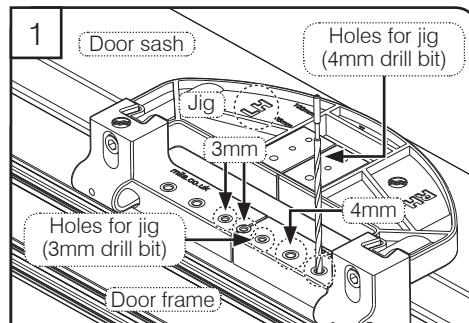
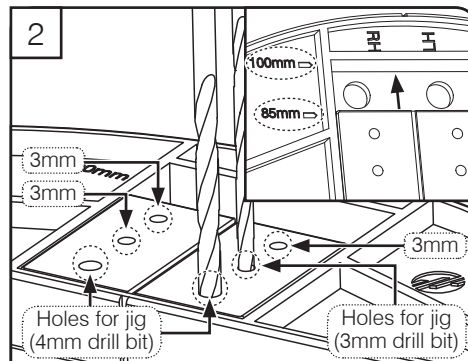


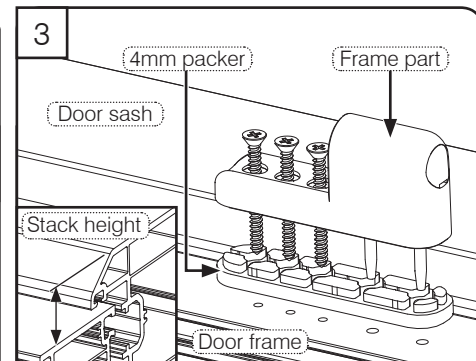
iDeal Flag Hinge Fitting Instructions



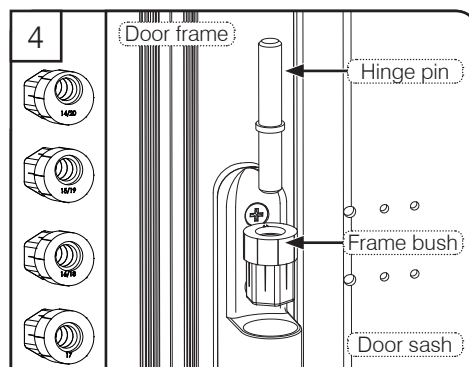
Centralise door sash within frame at correct coverage. Place jig tightly up to the sash in the desired location. Ensure correct handing of jig, LH or RH should read from left to right. **Frame drilling:** For hinge pins use a 4mm drill bit to drill the first 2 holes from bottom of door. For screws, use a 3mm drill bit on the next 3 holes.



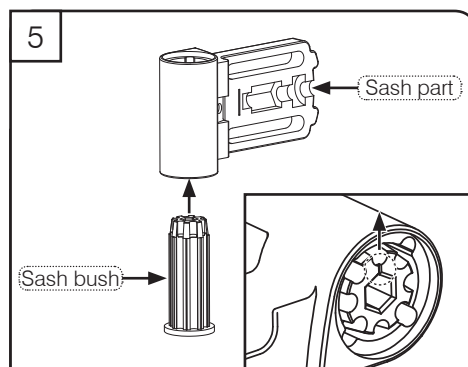
Ensure jig is set to 85 or 100mm to suit hinge. **Sash drilling:** Ensure the jig doesn't move position. For datum pegs, use a 4mm drill bit to drill the front 2 holes from frame side. For screws use a 3mm drill bit to drill the 4 remaining holes.



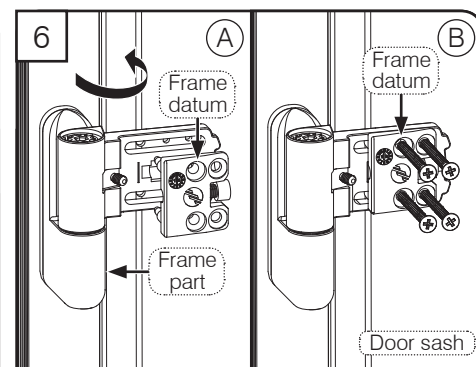
With the holes drilled, align the frame part with the pins to the bottom of the door. For 21mm or greater stack heights, fit the supplied 4mm packer. Using appropriate screws, fasten frame part to your door frame.



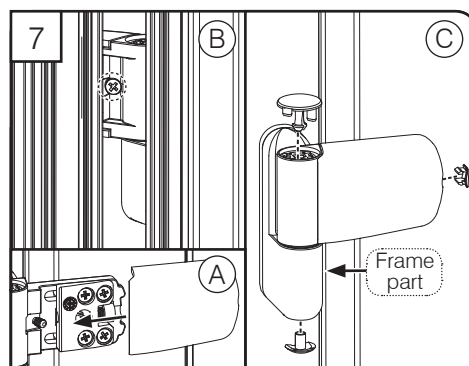
Depending on stack height, select the appropriate frame bush. By turning the bush 180° each bush gives two height options, except for 17mm version. Fit frame bush in the correct orientation with the hinge pin.



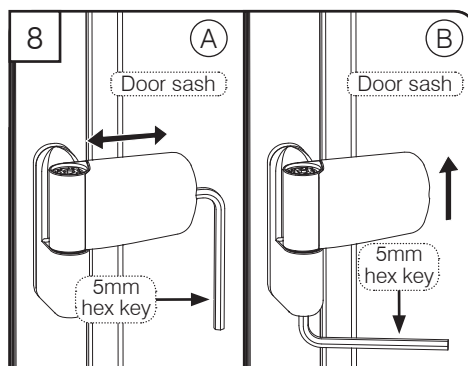
If the sash bush is not fitted, fit the sash bush with the mark pointing to the top of the sash part. As standard the sash bush should be fitted with the mark to the upwards position.



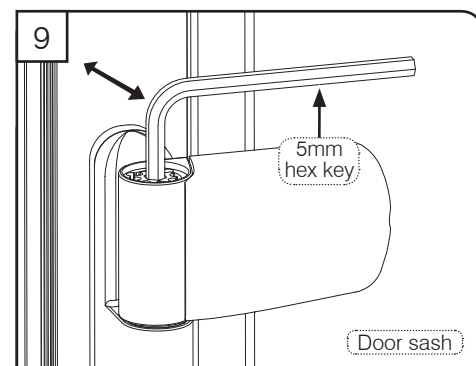
(A) Locate the sash part onto the hinge pin and rotate until against the sash. Now fit the sash datum onto sash part locating the pins into the 4mm holes on the sash. (B) Using appropriate screws, fasten sash part to your door sash.



(A) With all the sash parts fitted, slide the sash lid in situ. (B) Open the door to gain access to the lid screw and tighten the lid screw. (C) Fit sash end cap, bottom frame end cap and lid cap.



(A) **Lateral adjustment:** Remove lid cap and using 5mm hex key adjust up to ± 5 mm. (B) **Vertical adjustment:** Remove frame end cap and using 5mm hex key adjust up to $+ 4$ mm.



Compression adjustment: Remove sash bush cap and using 5mm hex key adjust up to ± 1 mm.