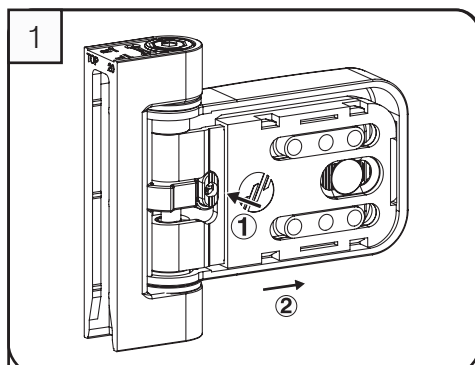
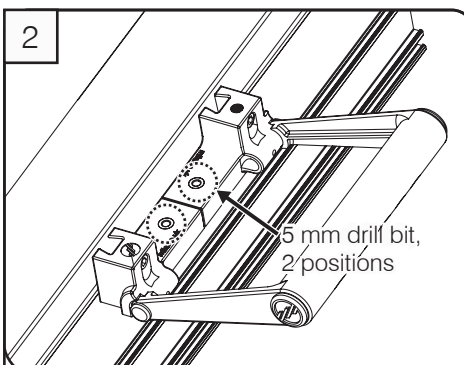


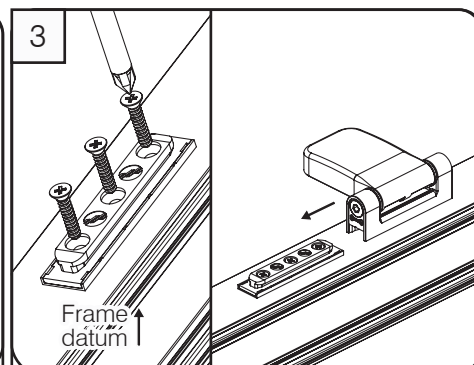
ProSecure Pace Door Hinge Fitting Instructions



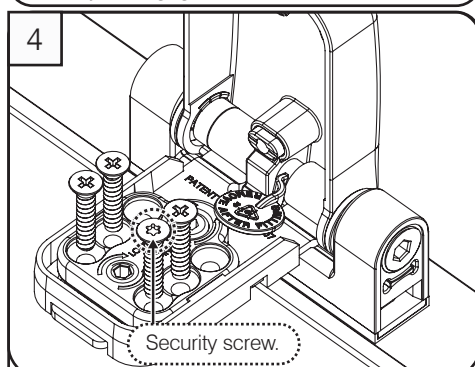
Using a flat blade screwdriver depress the latch beneath the sash part (1) to release the sash cover. Slide the cover in the direction shown (2) until fully disengaged.



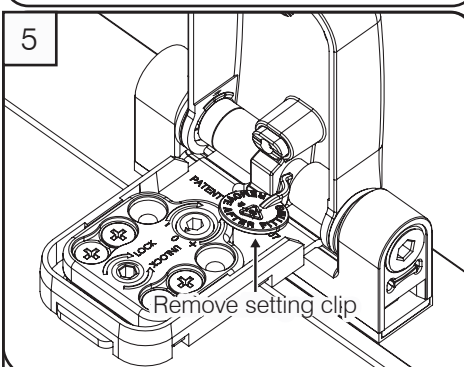
Using the Mila jig for alignment, pre-drill holes for frame datum using 5 mm drill bit.



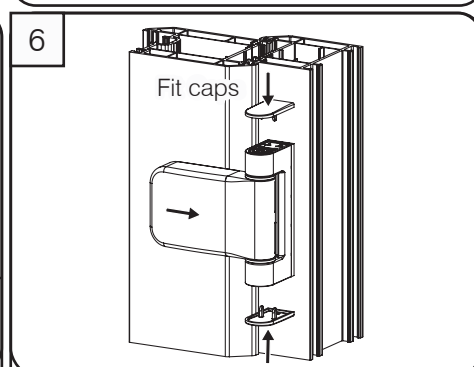
Fit the frame datum into the drilled 5 mm holes and screw in place. Take hinge and align the aperture with the frame datum and slide down into position.



Lift cover and secure the sash part using 4x long screws (on a open outward door we recommend using security screws or a hinge protector). **Screws NOT supplied.**

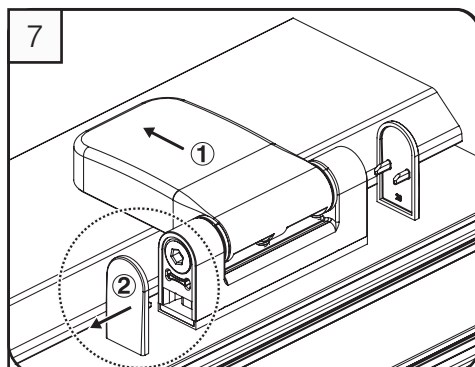


Remove setting clip.

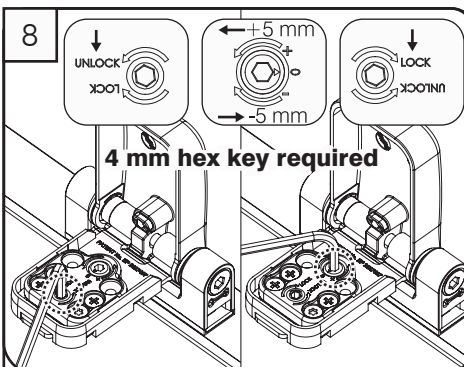


Close sash cover and slide back in the direction shown to engage the latch. Fit caps.

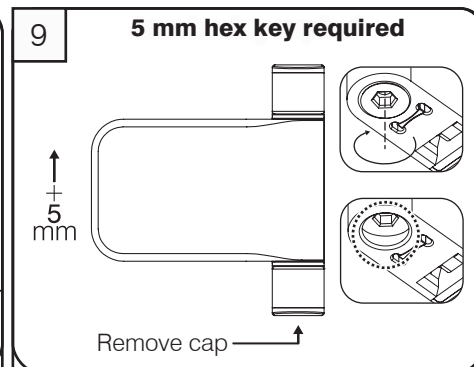
ProSecure Pace Door Hinge Adjusting Instructions



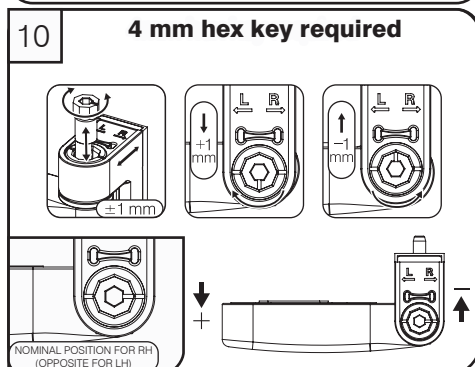
Release the sash cover (refer to step 1). Slide the cover in the direction shown (1). Using a flat blade screwdriver, release the cover caps (2).



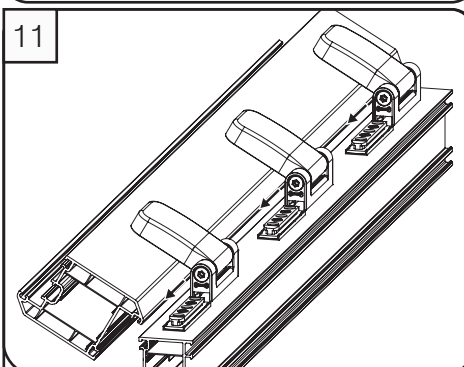
To adjust lateral position, first turn the unlock cam a 1/4 turn. Then use the adjustment cam to adjust up to 5 mm in either direction. Finally tighten lock cam.



Height adjustment: Using a 5 mm hex key turn the screw up to lift the hinge by up to 5 mm.



Compression adjustment: Push out hinge pin and turn to alter compression.



The sash can be removed and fitted when in an open position by lifting or lowering the sash assembly onto the frame datum.