
 1121-CPR-UK-AC7851	MILA, DAVENTRY, NN11 8RB. UK							14		
 2812-CPR-AC5051	EN1935: 2002		2	7	3	0	1	4	0	10

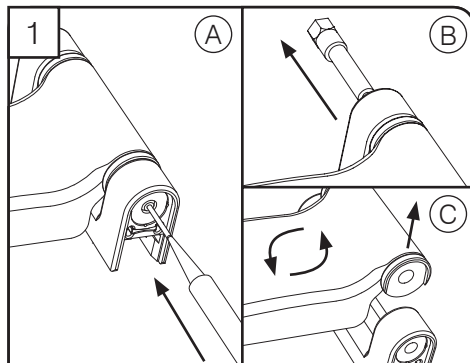
Secured by Design



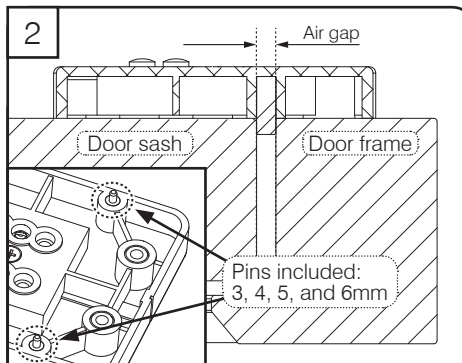
Police Preferred Specification

**MILA**

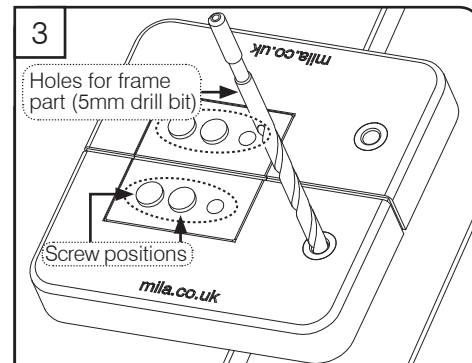
## ProSecure Flush Door Hinge (HD) Fitting Instructions



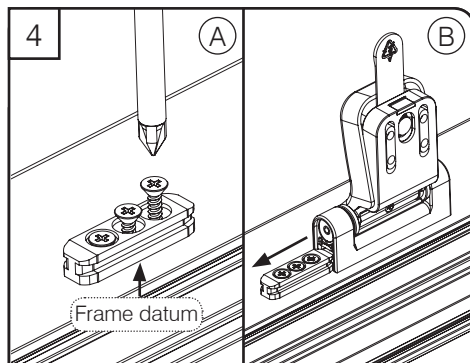
As default the hinge will be set as right handed.  
(A) Ensure that sash part is at a right angle to frame part (B) Push out the pin from bottom.  
(C) Lift free and reverse sash and refit pin.



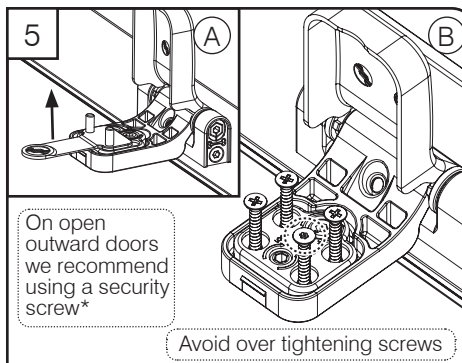
To correctly use the Mila jig, measure the air gap between the door sash and frame. Take the matching pin size and insert them into the underside of the jig, as shown above.



Align the jig using the underside pins then drill holes for the frame and sash part choosing the most suitable position for your door

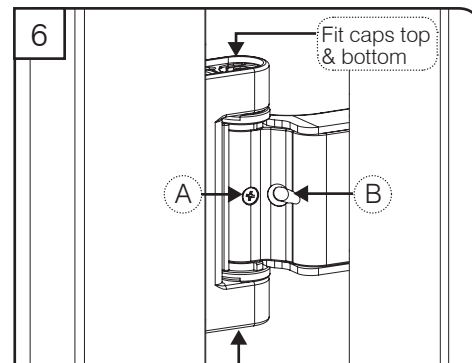


(A) Fit the frame datum into the drilled 5mm holes and screw in place. (B) Take hinge and align the aperture in the frame part and slide into position.



(A) Lift sash cover and remove tongue.  
(B) Secure using 4x screws. Close cover.

\*Screws NOT supplied.



Open the door and locate position (B) (as shown above). Using the screw provided fit and tighten to secure the cover.