

UK CA	1121-CPR-UK-AC7851	MILA, DAVENTRY, NN11 8RB. UK	14
CE	2812-CPR-AC5051	EN1935: 2002 2 7 3 0 1 4 0 10	

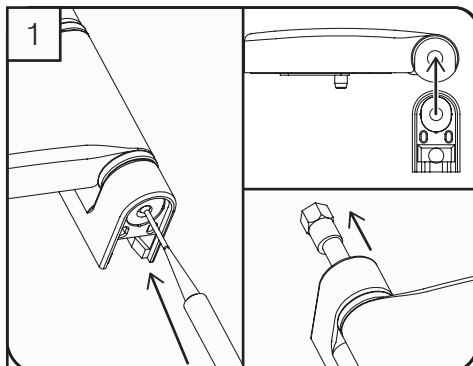
Secured by Design



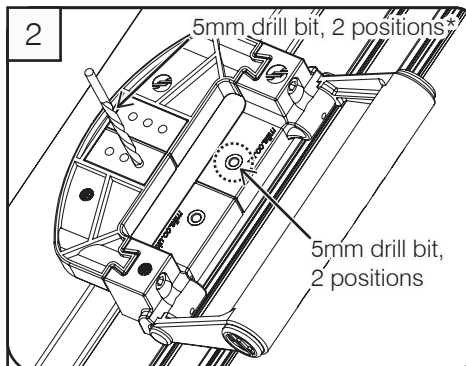
Police Preferred Specification

MILA

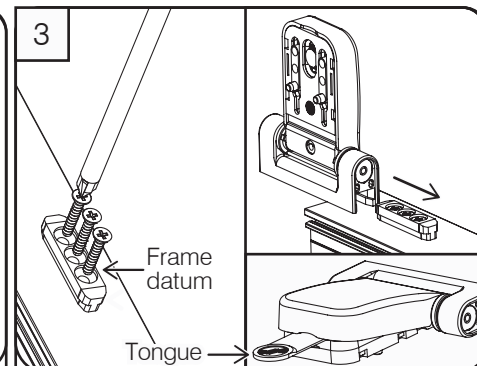
ProSecure Door Hinge Fitting Instructions



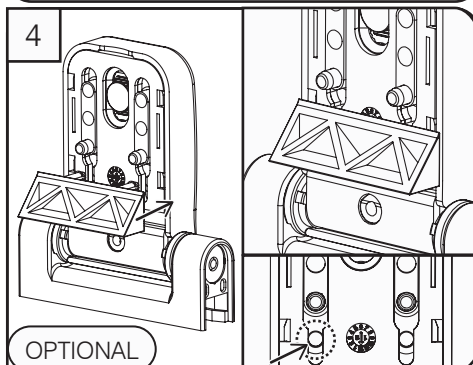
As default the hinge will be set as right handed. To change first ensure that sash part is at a right angle to frame part and push out the pin from bottom. Then reverse sash and refit pin.



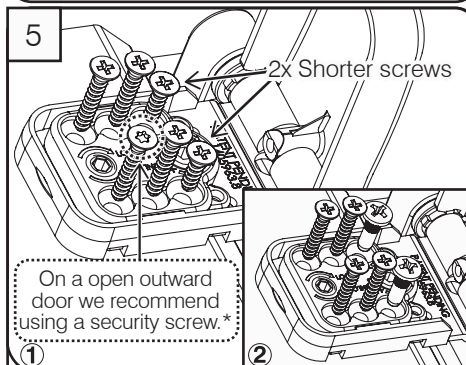
Using the Mila jig for alignment, drill holes for frame part and if fitting *optional fixing pegs drill the sash part choosing the most suitable position for the pins on the profile.



Fit the frame datum into the drilled 5mm holes and screw in place. Take hinge and align the aperture in the frame part and slide into position. Lift sash cover and remove tongue.

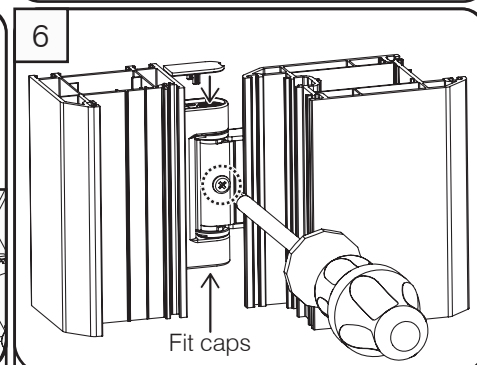


If required an optional profile dedicated packer can be fitted. Align pegs with holes in hinge and push to insert for positive fit.



(1) Secure using 4x long screws & 2x short screws. Or (2) Use 4x long screws & 2x supplied fixing pegs. Close cover.

***Security screw NOT supplied.**



Open the sash to gain access to the security screw location and using screw provided fix in place to secure cover and hinge pin.