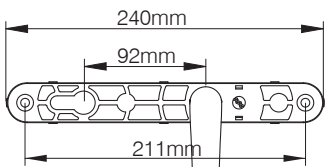
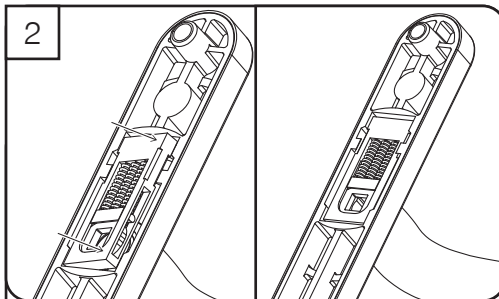


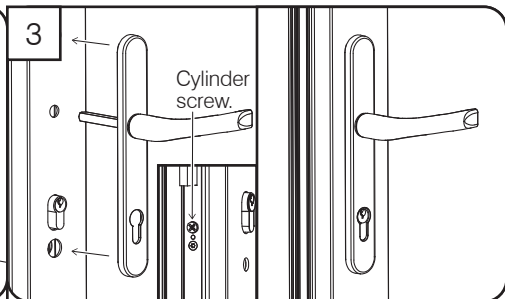
# Supa™ Standard Door Handle 240mm - Fitting Instructions

To ensure this handle fits your door please check that the 3 measurements below, match your requirements:

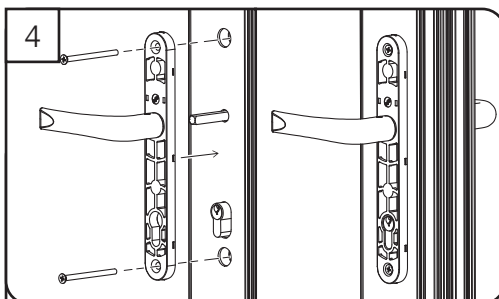
<p>1</p> 	<p>The measurement from the centre of the locking lever to the centre of the keyhole is known as the PZ distance - the PZ distance of this handle is 92mm.</p>	<p>The distance between the centre of the top screw and the centre of the bottom screw. The distance on this handle is 211mm.</p>	<p>The length of the handle backplate, top to bottom - this handle backplate is 240mm long.</p>
---	--	---	---



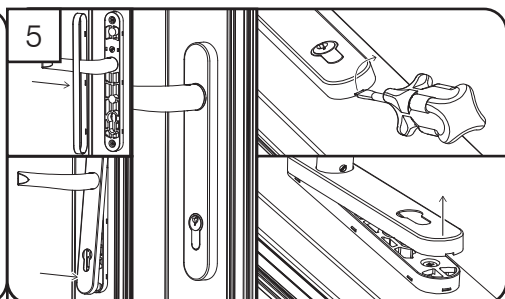
For non-sprung lock mechanisms; both handles will require the supplied spring cassette to be fitted. As shown above, align the spring cassette at an angle and then push firmly until located.



Slacken off the cylinder screw. Insert correct length of spindle (supplied) into the external lever. Slide the spindle through the lock mechanism from the external side of the door. Position the external backplate up against the door, clearing the cylinder.



Slide the internal backplate onto the spindle and up to the internal side of the door. Select the correct length screws (supplied). Insert both screws and screw together taking care not to over tighten.



Finally slide the cover over the lever, locating the top part first. Then push firmly at the bottom of the cover to secure, as shown above. To remove use a screw driver, carefully insert into aperture & twist until the cover pops off. Finally tighten up cylinder screw.

This handle complies with: BS EN 1906: 2012 - Pass code: 4|7|-|0|1|5|0|A

## Supa™ Stainless Steel Cleaning Instructions

Stainless Steel performs best when clean. As such we recommend that your Supa™ stainless steel product is regularly cleaned to maintain its appearance and preserve its corrosion resistance.

We recommend cleaning your product once a month and more often in areas subject to heavy soiling or frequent use.

All exposed stainless steel surfaces should be wiped over with a clean cloth and a solution of warm water and a mild detergent, immediately followed by rinsing in clean water and the surface dried thoroughly with a soft cloth.

Carbon steel brushes and steel wool should be avoided as they may damage or compromise the surface, which could lead to rusting.