

Supa™ Pull Bar (In-line & Offset)

Fitting Instructions

Tools & Equipment Required:

- Measuring tape
- Pencil / marker
- 4mm drill bit (pilot hole for concealed fix & to determine door material)
- 8mm drill bit (through fix applications)
- PH3 driver bit or screw driver
- 3mm hex key (supplied in kit)

Fixing Kit Options:

① Back-To-Back

- A - 2x M8 screw
- B - 2x Threaded boss (external use)
- C - 2x Boss (internal use)
- D - 4x Plastic washer
- E - 2x Plastic bush (glass only)
- F - 1x 3mm hex key

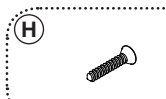
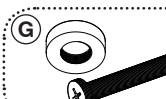
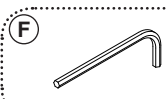
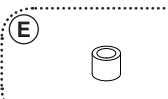
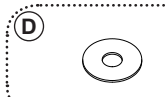
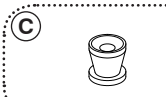
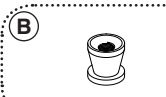
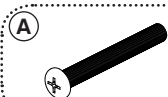
② Concealed Face-Fix

- H - 2x 44x6mm countersink screw
- C - 2 x Boss
- D - 2 x Plastic washer
- F - 1 x 3mm hex key

③ Through-Fix

- B - 2x Threaded boss (external use)
- D - 4x Plastic washer
- E - 2x Plastic bush (glass only)
- F - 1x 3mm hex key
- G - 2x M8 screw with separate 25mm cap (internal use)

ALWAYS USE
APPROPRIATE PPE
WHEN USING TOOLS



Marking Up & Preparation:

Mark the relevant fixing points at the desired location on the door. It is important to choose your fixing location wisely to ensure it doesn't have any detrimental impact on the operation of the door with sufficient clearance for the gearbox and cylinder.

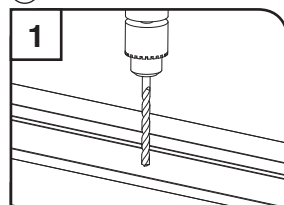
In-line and offset bars have two fixing points up until and including the 1200mm bar, **1400mm and above** have a third central fixing location and will **require an additional fixing pack**.

The type of fixing used to install the pull bar will be dependent on your door material specification. **Please note** if you intend to use the **concealed fix option** with a **foam filled door or similar**, please ensure the fixing area is solid.

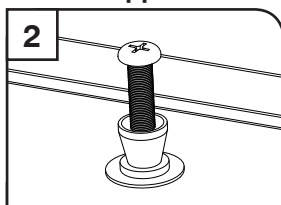
All three fixing options are suitable for solid core composite doors. The concealed fix will require pre-drilling with a 4mm drill bit.

If in doubt, contact your door supplier to discuss.

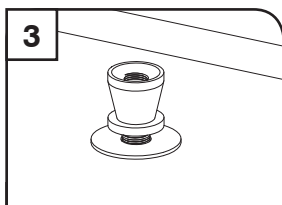
① Back-To-Back Fix – Dual Bar Application



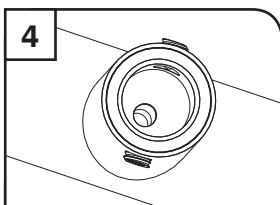
Drill an 8mm hole into the door at the required locations. For accuracy, we advise you to measure & mark both sides of the door and drill from either side.



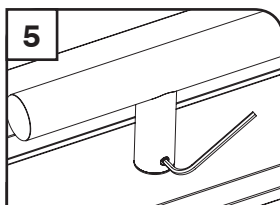
Using the M8 screw fixing, slide on one of the non-threaded boss' ensuring the flat base is towards the door, then add a clear plastic washer and insert from the inner side of the door.



Add the second plastic washer to the external side and then screw on the threaded boss ensuring the flat base is against the door and tighten using a PH3 screwdriver or drill driver bit, don't overtighten. Repeat this process for the other fixing positions.

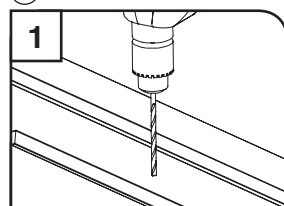


Ensure the grub screws are fully out of the pull bar handle before fitting to the boss.

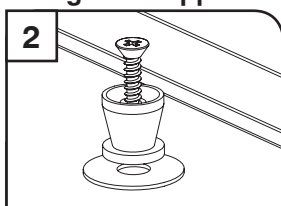


Locate the pull bar handle over the fixing boss and tighten both grub screws at either side of each fixing location to secure in place.

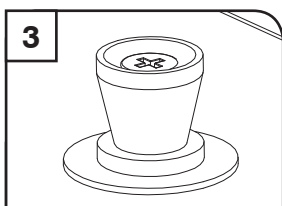
② Concealed Face-Fix – Single Bar Application



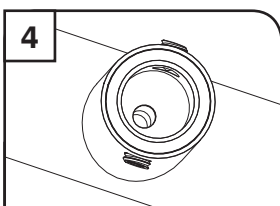
Pre-drill using a 4mm drill bit, ensuring not to pierce through the underside of the door.



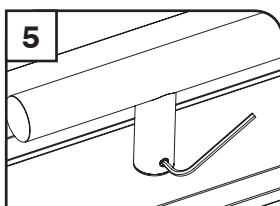
Slot the non-threaded boss onto the 44x6mm countersink screws ensuring the flat base is towards the door. Add the plastic washer before fixing to the door.



Fix into position using a PH3 screwdriver or drill driver bit. Take care to not overtighten. Repeat this process for the other fixing positions.

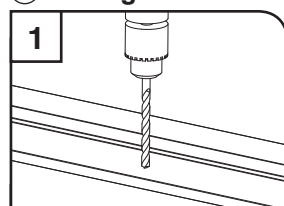


Ensure the grub screws are fully out of the pull bar handle before fitting to the boss.

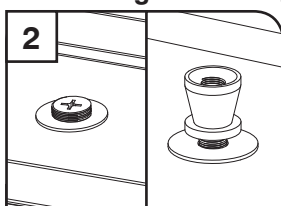


Locate the pull bar handle over the fixing boss and tighten both grub screws at either side of each fixing location to secure in place.

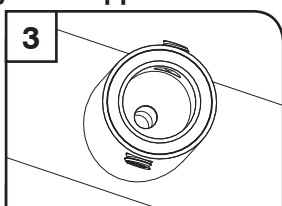
③ Through-Fix With Internal Fixing Disc – Single Bar Application



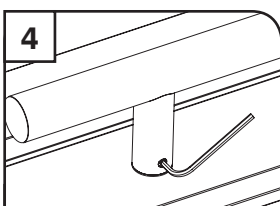
Drill an 8mm hole into the door at the required locations. For accuracy, we advise you to measure & mark both sides of the door & drill from either side.



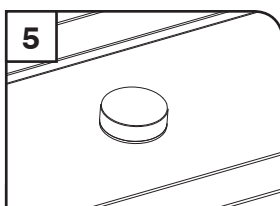
Insert the M8 screw from the internal door side & position a plastic washer over the external side. Fit the threaded boss ensuring the flat base is towards the door & tighten using a PH3 screwdriver or drill driver bit, don't overtighten. Repeat this process for the other fixing positions.



Ensure the grub screws are fully out of the pull bar handle before fitting to the boss.



Locate the pull bar handle over the fixing boss and tighten both grub screws at either side of each fixing location to secure in place.



Screw on 25mm decorative cover over the head of the internal fixing screw to complete.