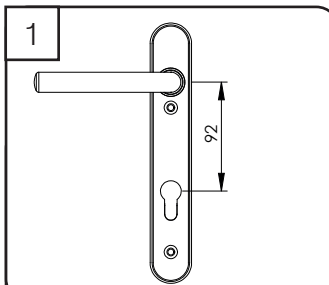
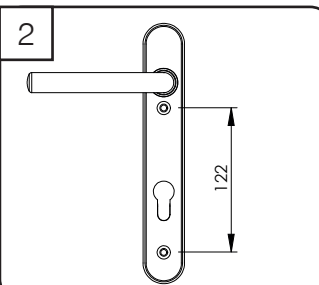


ProStyle Door Handle (220mm) - Fitting Instructions

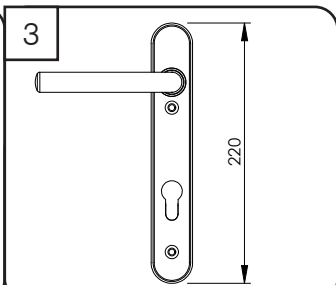
To ensure this handle fits your door please check that the following 3 measurements match your requirements:



The measurement from the centre of the locking lever to the centre of the keyhole known as the PZ distance - the PZ distance of this handle is 92mm.

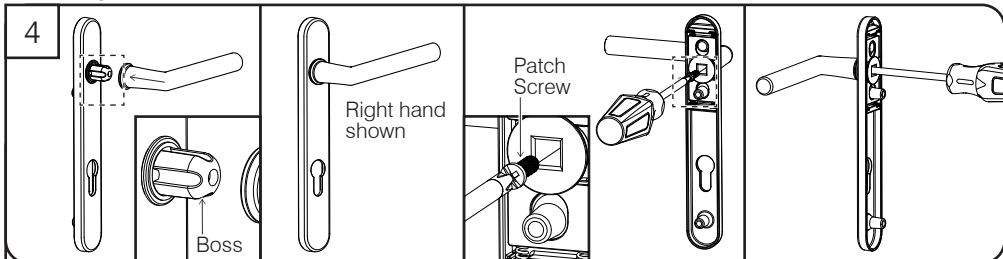


The distance between the centre of the top screw and the centre of the bottom screw - this distance on this handle is 122mm.



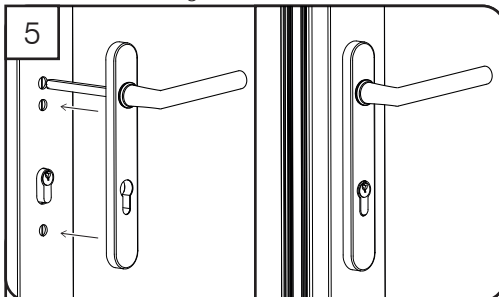
The length of the handle backplate, top to bottom - this handle backplate is 220mm long.

Lever fitting



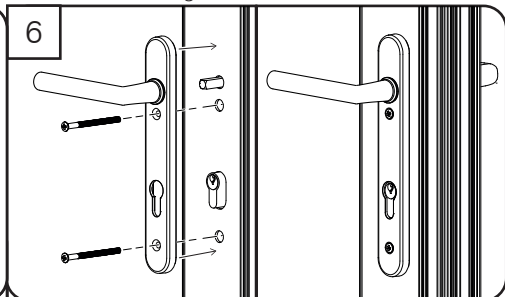
Take your chosen lever and align to the desired direction left or right hand. Then slide the lever over the boss. While holding the lever by hand apply pressure to ENSURE THE LEVER IS FULLY UP AGAINST THE BACKPLATE. Take the patch screw (supplied) & insert the screw through the back of the boss into the lever. Tighten using a PH2 screw driver. IMPORTANT: The patch screw must be fully tightened to ensure the lever is fully secured. The screw will NOT be able to be adjusted after a 1 HOUR period.

External handle fitting



Insert correct length of spindle (supplied) into the external lever. Slide the spindle through the lock mechanism from the external side of the door. The external backplate should fit up against the profile clearing the cylinder.

Internal handle fitting



Slide the internal backplate onto the spindle and up to the internal profile. Select the correct length screws (supplied). Insert both screws and screw together taking care not to over tighten.

Cleaning: Door handles should be cleaned with a soft, dry cloth. If further cleaning is required we recommend a mild solution of warm, soapy water on a soft cloth. Dry thoroughly afterwards.