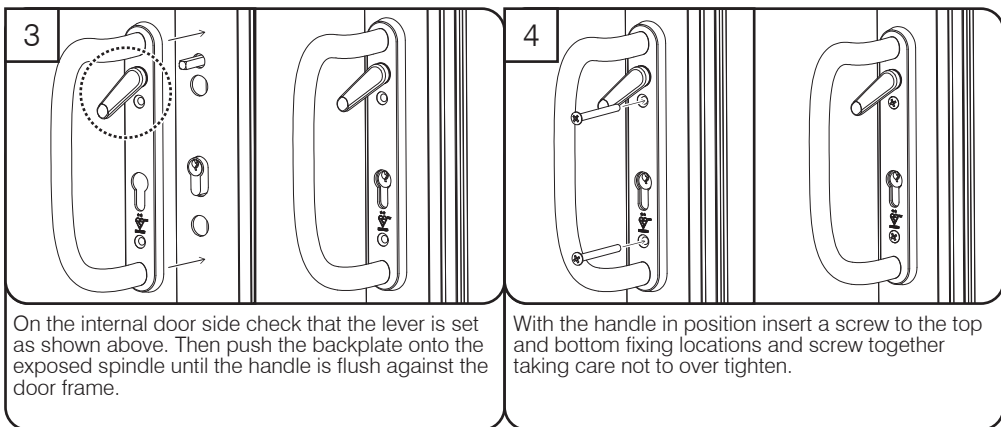
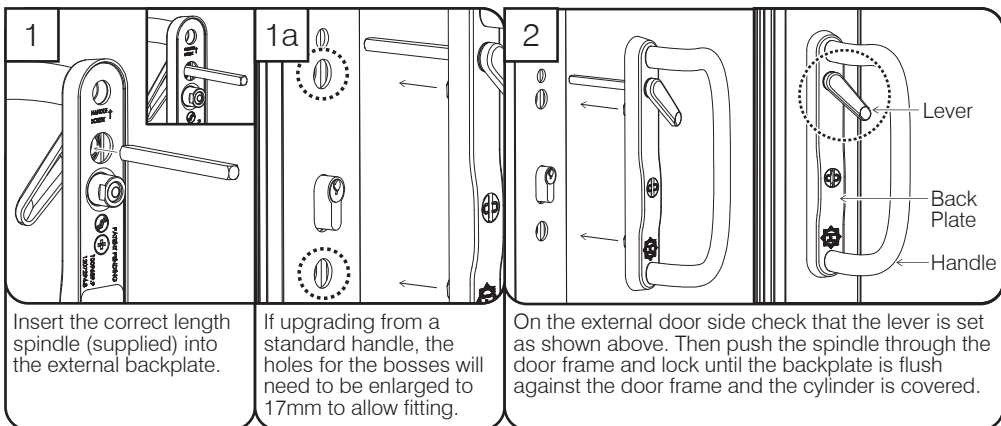


# ProSecure Patio Door Handle - Fitting Instructions

PLEASE NOTE: This handle is compatible with Yale® patio door locks.



## This handle achieves - TS007: 2014 2 star rating

This security hardware offers additional defence to several types of attack. However, to ensure enhanced resistance to all commonly used attack methods, this product **MUST** be used in conjunction with a one star or three star cylinder meeting TS 007 to ensure security.

The star marking will be marked on the cylinder itself. However, in the case of an already-installed cylinder, checking this may require removal of the cylinder from the door. Cylinders supplied before the availability of this specification may be marked with the BSI "Kitemark" logo without any indication of star rating. These should be accepted as equivalent to a one star cylinder under this specification.

In a cylinder lock, it is the cylinder which actually recognises the correct key and provides protection from picking and other forms of manipulation; cylinders which have been successfully tested against these forms of attack under this specification will carry 1-star. A three star cylinder offers the same protection as a one star cylinder plus protection from force attack."

Cleaning: Door handles should be cleaned with a soft, dry cloth. If further cleaning is required we recommend a mild solution of warm, soapy water on a soft cloth. Dry thoroughly afterwards.