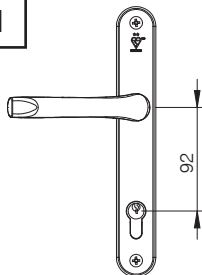


# ProSecure Door Handle 240mm - Fitting Instructions

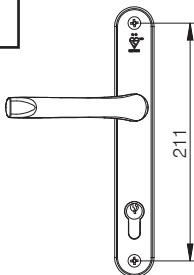
To ensure this handle fits your door please check that the following 3 measurements match your requirements:

1



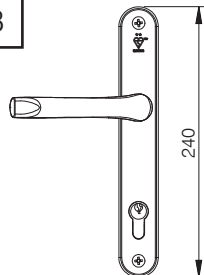
The distance between the centre of the locking lever to the centre of the keyhole known as the PZ distance - the PZ distance of this handle is 92mm.

2



The distance between the centre of the top screw and the centre of the bottom screw - this distance on this handle is 211mm.

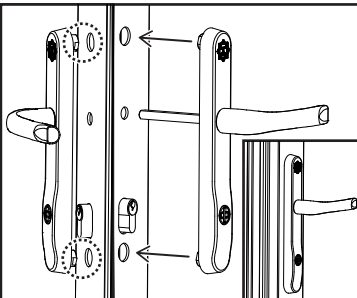
3



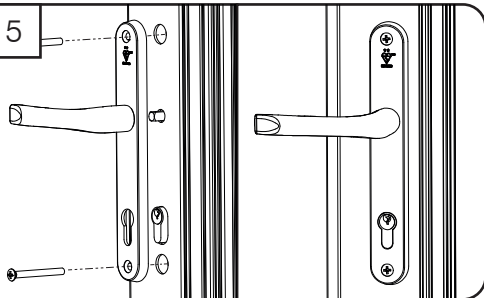
The length of the handle backplate, top to bottom - this handle backplate is 240mm long.

4

If upgrading from a standard handle, the holes for the bosses will need to be enlarged 17mm to allow fitting.



5



Insert correct length of spindle (supplied) into the external lever. Slide the spindle through the lock mechanism from the external side of the door. The backplate should fit up against the sash covering the cylinder lock. On the internal side of the door slide the backplate onto the spindle & up to the sash. Select the correct length screws (supplied) & insert through fixing holes & screw together taking care not to over tighten.

**This handle complies with: BS EN 1906: 2012 - Pass code: 4|7|-|0|0|4|0|B and also achieves TS007: 2014 2 star rating**

This security hardware offers additional defence to several types of attack. However, to ensure enhanced resistance to all commonly used attack methods, this product **MUST** be used in conjunction with a one star or three star cylinder meeting TS 007 to ensure security.

The star marking will be marked on the cylinder itself. However, in the case of an already-installed cylinder, checking this may require removal of the cylinder from the door. Cylinders supplied before the availability of this specification may be marked with the BSI "Kitemark" logo without any indication of star rating. These should be accepted as equivalent to a one star cylinder under this specification.

In a cylinder lock, it is the cylinder which actually recognises the correct key and provides protection from picking and other forms of manipulation; cylinders which have been successfully tested against these forms of attack under this specification will carry 1-star. A three star cylinder offers the same protection as a one star cylinder plus protection from force attack."

**Cleaning:** Door handles should be cleaned with a soft, dry cloth. If further cleaning is required we recommend a mild solution of warm, soapy water on a soft cloth. Dry thoroughly afterwards.