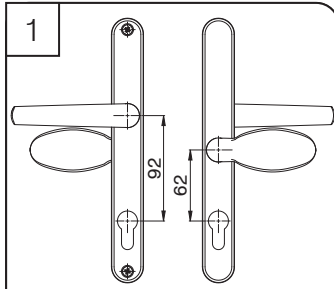


Fitting Instructions

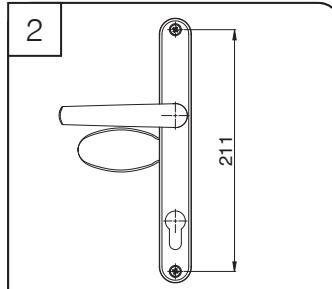
Door Handle 62 / 92mm PZ



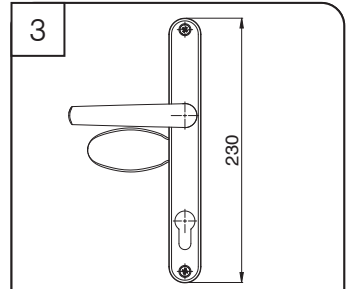
To ensure this handle fits your door please check that the following 3 measurements match your requirements:



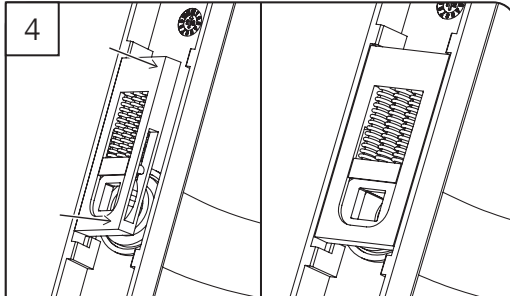
The measurement from the centre of the lever or pad to the centre of the keyhole, is known as the PZ distance. On this handle it's 62mm on the external side and 92mm on the internal.



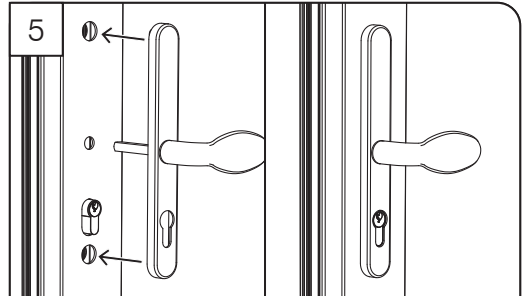
The distance between the centre of the top screw and the centre of the bottom screw - this distance on this handle is 211mm.



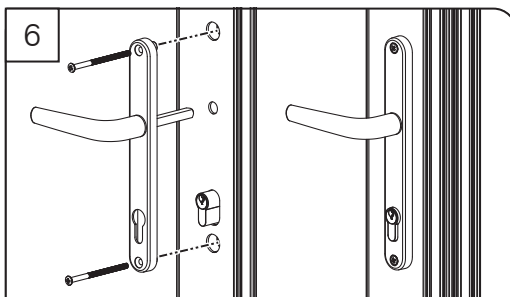
The length of the handle backplate, top to bottom - this handle backplate is 230mm long.



For non-sprung door locks both handles will require the supplied spring cassette to be fitted. As shown above, insert the spring cassette at an angle and then push firmly until located.



Insert correct length of spindle (supplied) into the external lever. Slide the spindle through the lock mechanism from the external side of the door. The external backplate should fit up against the profile clearing the cylinder lock.



Slide the internal backplate onto the spindle and up to the internal profile. Select the correct length screws (supplied). Insert both screws and screw together taking care not to over tighten.

Maintenance: To ensure that your product maintains its high-quality finish please; DO wipe regularly with a soft, damp cloth to remove any finger prints. We recommend that you only use warm soapy water with a lint free cloth. Wipe dry with a soft clean cloth. DON'T use abrasive cleaners or scouring pads, bleach or solvents.