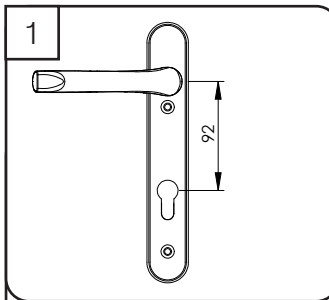
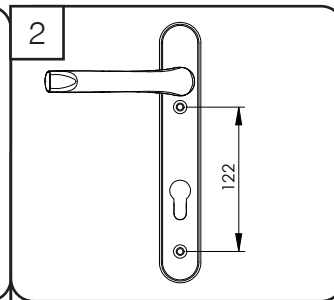


ProLinea Door Handle (220mm) - Fitting Instructions

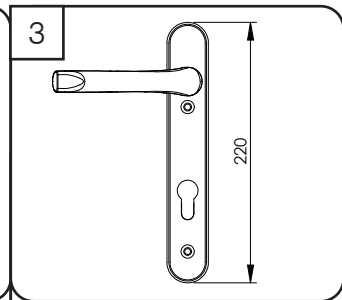
To ensure this handle fits your door please check that the following 3 measurements match your requirements:



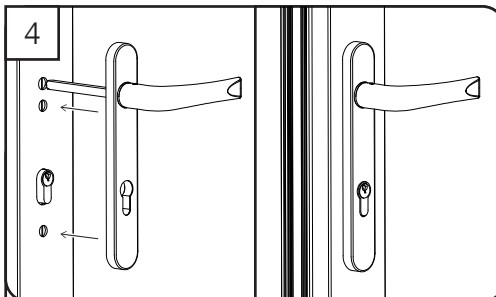
The measurement from the centre of the locking lever to the centre of the keyhole known as the PZ distance - the PZ distance of this handle is 92mm.



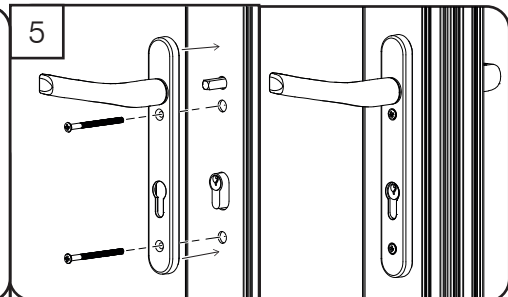
The distance between the centre of the top screw and the centre of the bottom screw - this distance on this handle is 122mm.



The length of the handle backplate, top to bottom - this handle backplate is 220mm long.



Insert correct length of spindle (supplied) into the external lever. Slide the spindle through the lock mechanism from the external side of the door. The external backplate should fit up against the profile clearing the cylinder lock.



Slide the internal backplate onto the spindle and up to the internal profile. Select the correct length screws (supplied). Insert both screws and screw together taking care not to over tighten.

Cleaning: Door handles should be cleaned with a soft, dry cloth. If further cleaning is required we recommend a mild solution of warm, soapy water on a soft cloth. Dry thoroughly afterwards.