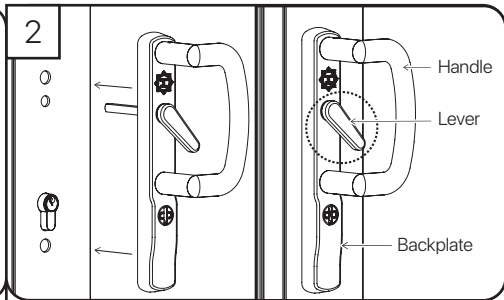
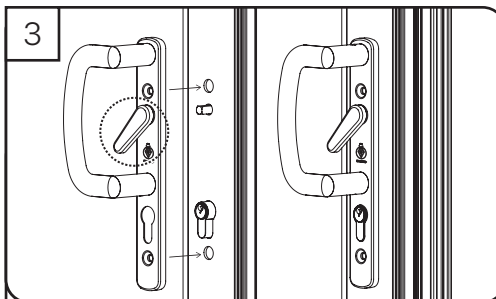


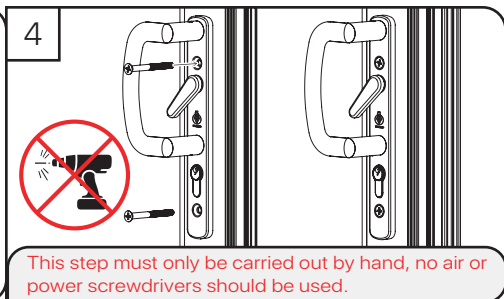
Insert the correct length spindle into the external backplate.



On the external door side check that the lever is set as shown above. Then push the spindle through the door frame and lock until the backplate is flush against the door frame and the cylinder is covered.



On the internal door side check that the lever is set as shown above. Then push the backplate onto the exposed spindle until the handle is flush against the door frame.



This step must only be carried out by hand, no air or power screwdrivers should be used.

With the handle in position, insert a screw to the top and bottom fixing locations and screw together taking care not to over tighten.

This handle complies with: BS EN 1906: 2012 - Pass code: 4|7|-|0|1|5|0|A & also achieves TS 007-1:2014 + A2:2018 (including corrigendum No.2) 2 star rating

This security hardware offers additional defence to several types of attack. However, to ensure enhanced resistance to all commonly used attack methods, this product **MUST** be used in conjunction with a one star or three star cylinder meeting TS 007 to ensure security.

The star marking will be marked on the cylinder itself. However, in the case of an already-installed cylinder, checking this may require removal of the cylinder from the door. Cylinders supplied before the availability of this specification may be marked with the BSI "Kitemark" logo without any indication of star rating. These should be accepted as equivalent to a one star cylinder under this specification.

In a cylinder lock, it is the cylinder which actually recognises the correct key and provides protection from picking and other forms of manipulation; cylinders which have been successfully tested against these forms of attack under this specification will carry 1-star. A three star cylinder offers the same protection as a one star cylinder plus protection from force attack."

Stainless Steel Cleaning Instructions

Stainless Steel performs best when clean. As such we recommend that your stainless steel product is regularly cleaned to maintain its appearance and preserve its corrosion resistance.

We recommend cleaning your product once a month and more often in areas subject to heavy soiling or frequent use.

All exposed stainless steel surfaces should be wiped over with a clean cloth and a solution of warm water and a mild detergent, immediately followed by rinsing in clean water and the surface dried thoroughly with a soft cloth.

Carbon steel brushes and steel wool should be avoided as they may damage the surface, which could lead to rusting.