

NEW

ADVANCE™ FRENCH CASEMENT

WINDOW CONVERSION KIT

exclusively for ADVANCE™ C Track Twin Cam Espag.



Progressive Hardware. Forward-Thinking Technology.
for the Aluminium sector



ADVANCE™ HIGH SECURITY TWIN CAM WINDOW LOCKING SYSTEM.

The ADVANCE™ Twin Cam Espag delivers high quality, high performance and high security.

Intelligently designed for high specification windows with slim sight-lines, the espag features twin stainless steel mushroom cams to secure the window. The twin cam pincer-like operation provides effective anti-jemmy resistance. Available in three cam heights - 4.5mm, 5.5mm and 7mm.

Manufactured from high quality grade 304 stainless steel with a flawless matt finish. Designed for Aluminium profile systems. Guaranteed for 10 years.

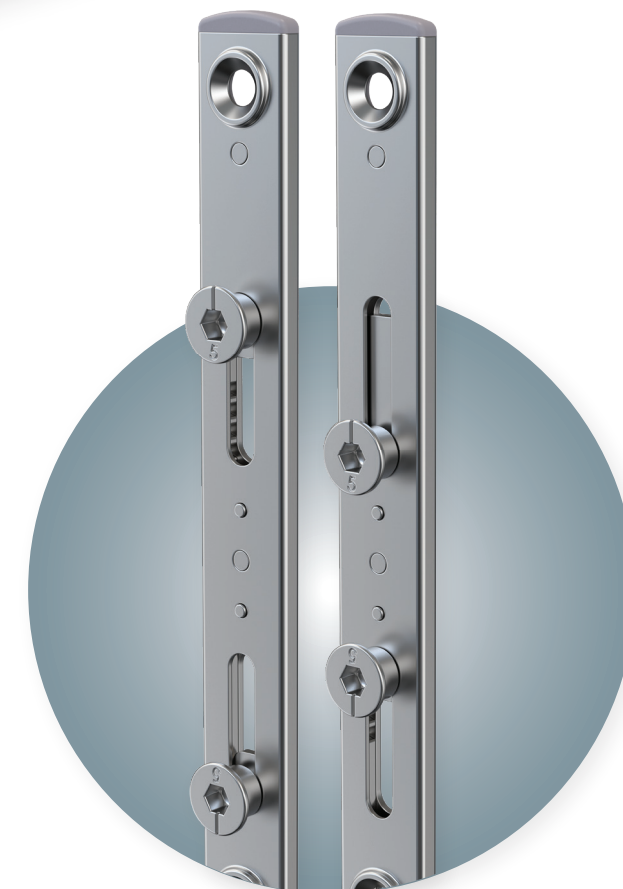
INDEPENDENTLY TESTED

Tested to PAS24: 2022 for enhanced security, salt spray tested to 480 hours for corrosion resistance, independently tested to 10,000 cycles for operational reliability. ADQ compliant and SBD approved.



Strong C-Track Design

Delivers increased strength over a U-track design during security testing as well as installation - preventing the track collapsing against the profile, enabling smooth, consistent operation.



Anti-jemmy Twin Cams for High Security

Stainless steel mushroom cams, compression adjustable (+/- 0.5mm)

ADVANCED INSTALLATION & OPERATION.

Slim & Exceptionally Strong.

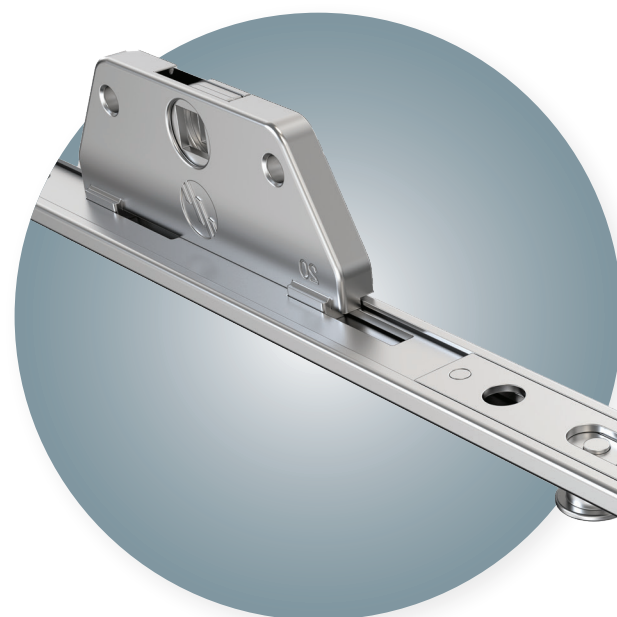
We know that gearboxes failing is a common issue with other espags - so ours has been 'break tested' beyond 40Nm for exceptional strength during operation.

Slim and offset, the gearbox is only 6mm wide and easy to install into slim profile systems with minimal sightlines. Available in 20mm backset (23mm and 26mm backset available on request).



Easy Identification

backset size & handing indicator (when in open position) are visible on the gearbox



Concealed Gears

to protect from dust & debris, & to ensure long-lasting smooth operation

DESIGN DETAILS

Nylon caps provide additional support around the end fixing point on the faceplate & offer protection from an exposed edge whilst enhancing aesthetics for a premium finish.



ADVANCE™ SPECIFICATION.



- **Stainless Steel Grade 304**
faceplate for superior corrosion resistance & in a premium matt finish
- **Enhanced Security**
Twin cam, anti-jimmy protection
- **Secured by Design**
logo stamped onto faceplate to highlight Police Preferred Specification & give homeowner peace of mind
- **Size**
visible on faceplate for easy identification
- **Quality Mark**
Mila Dot stamped onto faceplate
- **Stainless Steel Mushroom Cams**
Available in 3 sizes 4.5mm, 5.5mm & 7mm, & compression adjustable (+/- 0.5mm)
- **Considered Fixing Points**
Countersunk for enhanced aesthetics

Concealed Gears
to protect from dust & debris, for long lasting smooth operation

Handed Offset Gearbox
only 6mm wide for easy installation into slim systems

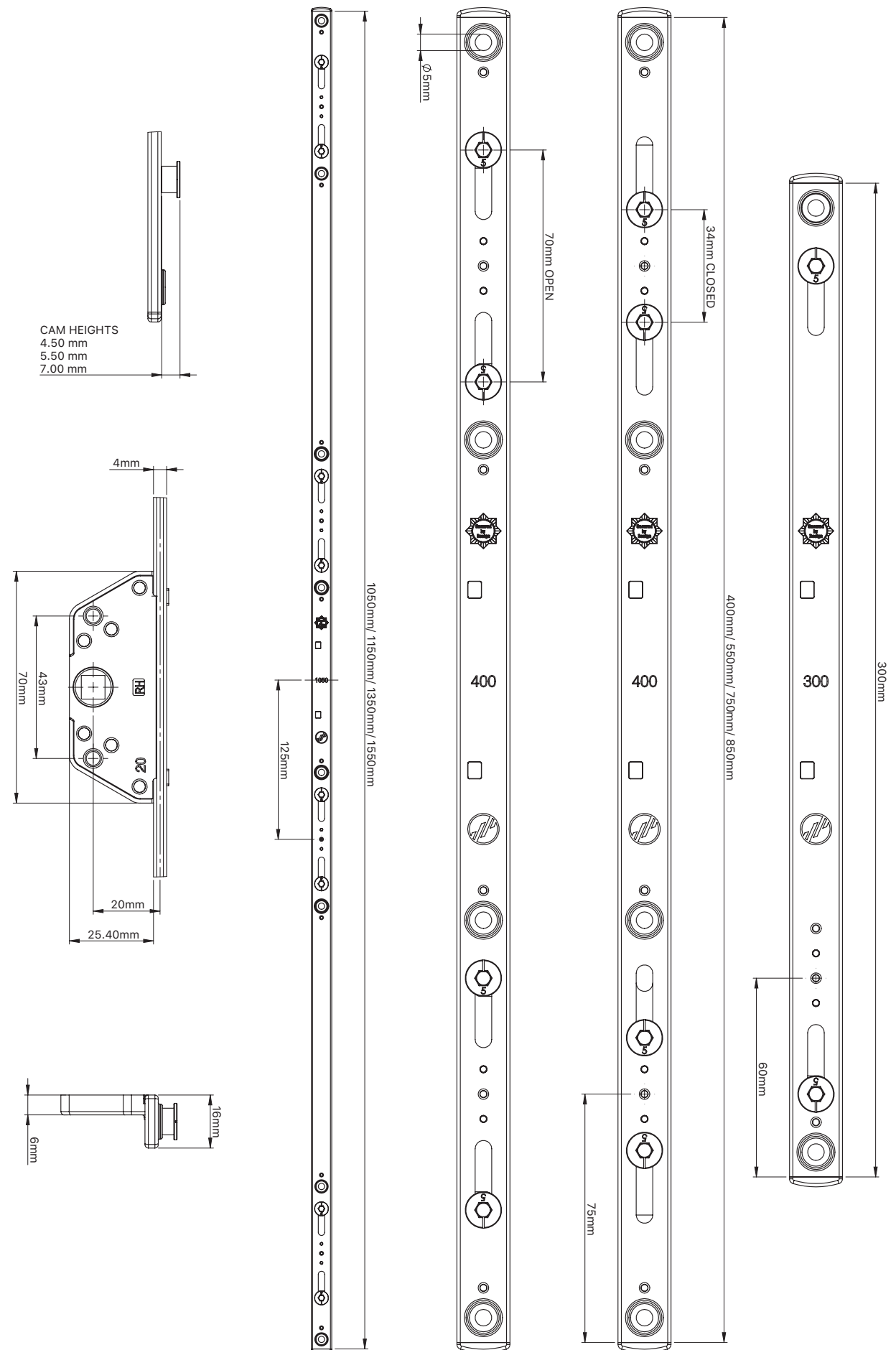
Strong Gearbox
tested beyond 40Nm to resist over-stressing & maintain smooth operation

Easy Identification
backset size & handing indicator (when in open position) on gearbox to speed fitting

C-track Design
for slim Aluminium profile systems

Nylon End caps
for extra support & a premium aesthetic

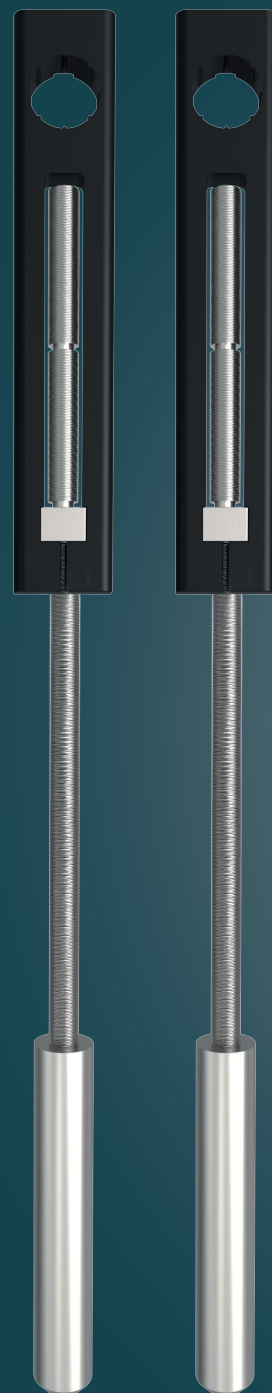
DIMENSIONAL DRAWINGS.



ADVANCE™ FRENCH CASEMENT KIT.



SHOOTBOLTS



Effortless Conversion

transforms our Advance™ C Track Twin Cam Espagnolette into a French casement shootbolt solution without extra hardware

Stock Smarter

one espagnolette enables multiple configurations, simplifying stock management

Threaded Bar with Adjustable Projection

fits a range of sash sizes precisely, giving installers greater flexibility

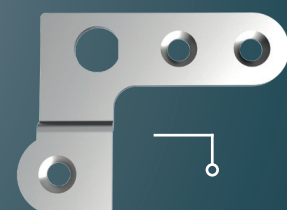
Certified Security

meets the stringent requirements of PAS 24:2022 compliant and BS EN 1670:2007 Grade 5 corrosion-resistant for proven long-term performance

STRIKER PLATES



END GUIDE



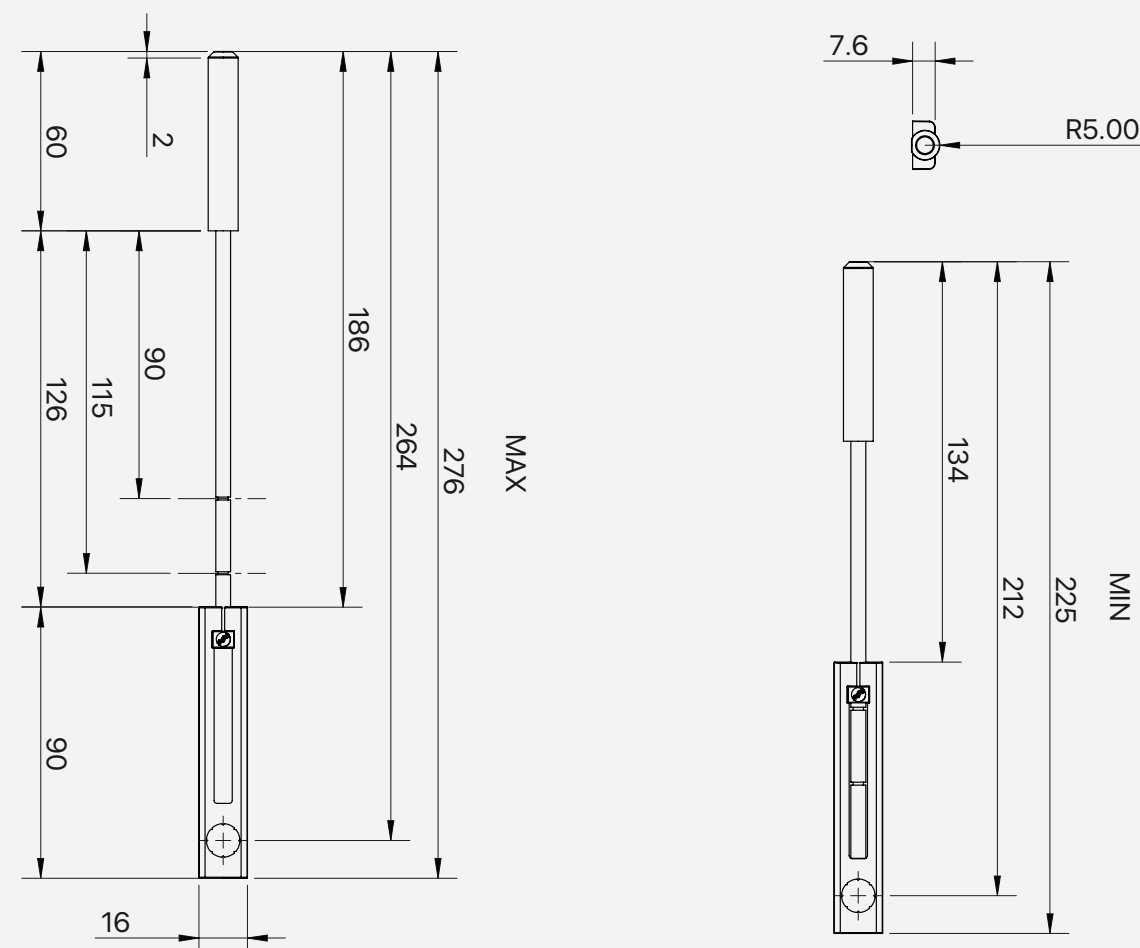
Quick Fit Components

tailored mullion guides make installation faster and easier

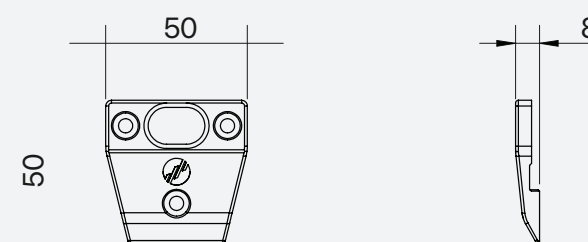


DIMENSIONAL DRAWINGS.

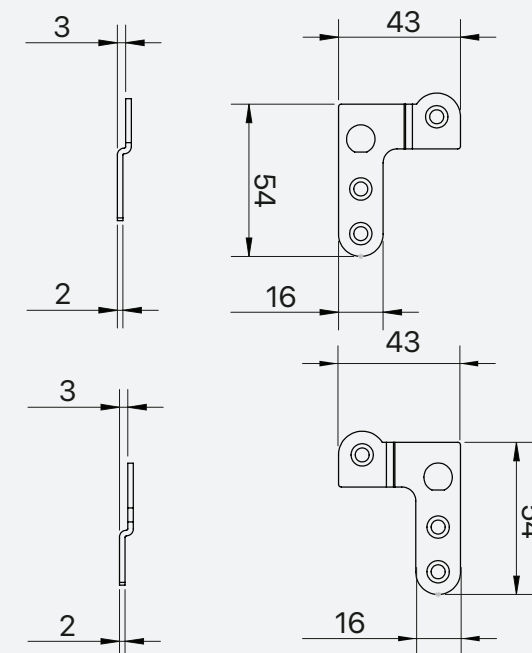
SHOOTBOLTS



STRIKER PLATE



END GUIDE



ADVANCE C TRACK TWIN CAM ESPAG
PART NUMBERS.

DESCRIPTION	LENGTH	NO. OF STRIKERS REQUIRED	20MM B/S 5.5MM CAMS, L/H	20MM B/S 5.5MM CAMS, R/H	20MM B/S 7MM CAMS, L/H	20MM B/S 7MM CAMS, R/H
ADVANCE™ OFFSET TWIN CAM ESPAG	300MM	2	034023	034003	034103	034083
ADVANCE™ OFFSET TWIN CAM ESPAG	400MM	2	034024	034004	034104	034084
ADVANCE™ OFFSET TWIN CAM ESPAG	550MM	2	034026	034006	034106	034086
ADVANCE™ OFFSET TWIN CAM ESPAG	750MM	2	034028	034008	034108	034088
ADVANCE™ OFFSET TWIN CAM ESPAG	850MM	2	034029	034009	034109	034089
ADVANCE™ OFFSET TWIN CAM ESPAG	950MM	2	034030	034010	034110	034090
ADVANCE™ OFFSET TWIN CAM ESPAG	1050MM	4	034031	034011	034111	034091
ADVANCE™ OFFSET TWIN CAM ESPAG	1150MM	4	034032	034012	034112	034092
ADVANCE™ OFFSET TWIN CAM ESPAG	1350MM	4	034034	034014	034114	034094
ADVANCE™ OFFSET TWIN CAM ESPAG	1550MM	4	034036	034016	034116	034096

Supplied in box quantities of 20

For profile related strikers, please contact the Mila sales office on 01327 312 400

FRENCH CASEMENT WINDOW CONVERSION KIT
PART NUMBERS.

DESCRIPTION	PROFILE		PART NUMBERS
ADVANCE™ FRENCH CASEMENT PACK	SMART ALITHERM	400	034864

Supplied in box quantities of 20

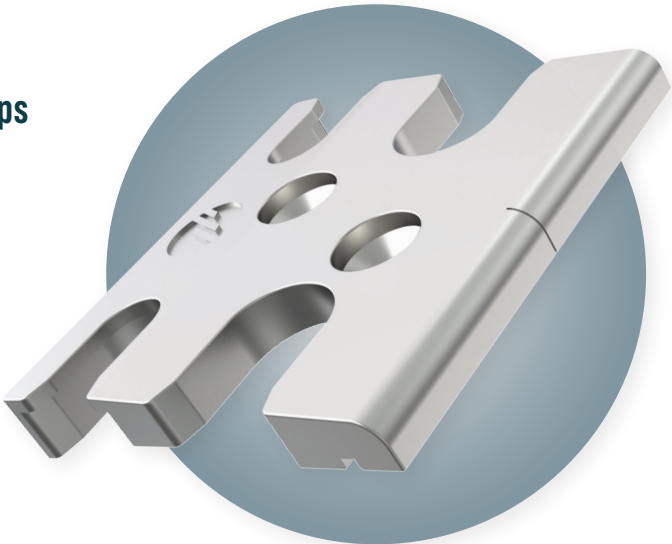
PROFILE RELATED MUSHROOM KEEP
PART NUMBERS.

DESCRIPTION	PROFILE		PART NUMBERS
ADVANCE™ MUSHROOM KEEP	GARNALEX SHEERLINE	CLASSIC	034802
ADVANCE™ MUSHROOM KEEP	SMART ALITHERM	400	034805
ADVANCE™ MUSHROOM KEEP	SMART ALITHERM	HERITAGE / 300	034806
ADVANCE™ MUSHROOM KEEP	REYNAERS	-	034807

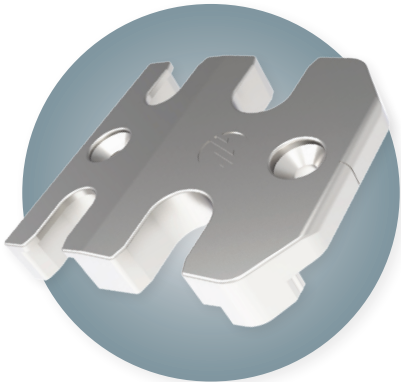
Supplied in box quantities of 20

Profile Specific Mushroom Keeps
for the Advance[™] C Track
Espagnolette

GARNALEX SHEERLINE CLASSIC



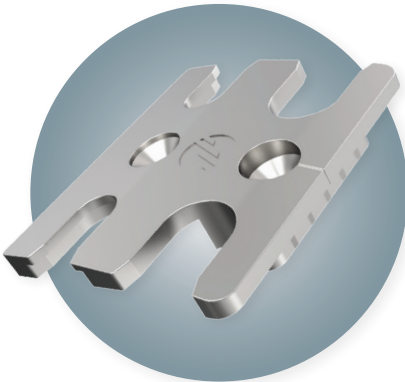
REYNAERS



SMART ALITHERM 400



SMART ALITHERM HERITAGE 300





SCAN ME.

Visit us online at milasecure.com

Call
01327 312 400

Email
sales@mila.co.uk

Visit
milasecure.com